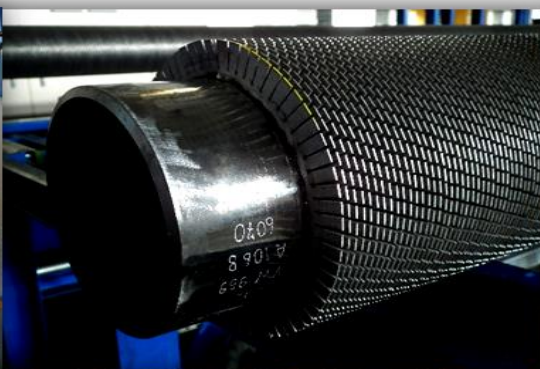




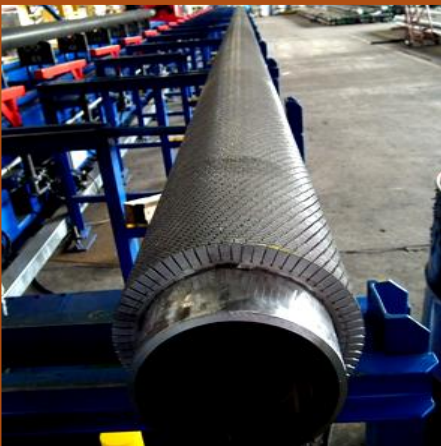
**VISAVAKIT PATANA
CORPORATION LIMITED**

**High Frequency Electric Resistance
Welded Finned Tubes**



<https://www.vipco-thai.com>

VIPCO'S BRIEF HISTORY



- **APR 1979** ESTABLISH COMPANY. SET UP VIPCO 1 WORKSHOP, PERFORMED ERECTION AND FABRICATION WORK FOR MINOR SCALE WORK.
- **JUL 1986** STARTED MAJOR FABRICATION AND ERECTION WORK FOR CEMENT PLANT CONSTRUCTION WORK AND LATER ON BECAME ONE OF THE MAJOR PLAYERS OF CEMENT PLANT CONSTRUCTION MECHANICAL CONTRACTOR UNTIL 1997.
- **MAY 1996** STARTED FABRICATION NON PRESSURE PARTS OF HRSG FOR MHI - LOCAL WANG NOI CCI PROJECT
- **JUN 1991** SET UP VIPCO 2 AS MAIN WORKSHOP.
- **SEP 1998** STARTED EXPORT WORK BY DELIVERY CO-OXIDIZER TO TAIWAN, FORMOSA PETROCHEMICAL PROJECT.
- **DEC 1998** STARTED FABRICATION WORK OF PULVERIZER CASING FOR EXPORT TO EUROPE WITH ORDER AWARDED FROM CPAG.
- **JAN 1999** STARTED EXPORT HRSG STACK TO ABU DHABI.
- **NOV 2000** TIS/ISO 9002:1994 - CERTIFIED BY MASCI.
- **JUN 2000** START EXPORT HRSG DUCT AND CASING TO USA.
- **AUG 2004** TIS/ISO 9001:2000 - CERTIFIED BY MASCI.
- **MAR 2004** U & S ASME CERTIFIED.
- **APR 2005** SIGNED CONTRACT WITH FIN TUBE TECHNOLOGY TO SET UP FINNED TUBE FACILITY IN NEW VIPCO'S WORKSHOP, LAEM CHABANG INDUSTRIAL ESTATE, THAILAND. LCB WORKSHOP WAS LOCATED IN EXPORT PROMOTION ZONE (EPZ), SO OPERATION AND EXPORT PRODUCTS FROM THIS EPZ WILL BE FREE FROM IMPORT TAX.
- **AUG 2005** LCB (LAEM CHABANG) WORK SHOP IS PARTIALLY COMPLETED AND BE USED TO ASSEMBLY VIPCO'S FIRST ORDER OF HRSG MODULE BOXES WHILE THREE TUBE FINNING MACHINES WERE UNDER ERECTION AND COMMISSIONING.
- **DEC 2005** START EXPORT HRSG MODULE BOXES ASSEMBLED FROM LCB WORK SHOP TO CA, USA FOR SIEMENS POWER PLANT PROJECT.

VIPCO'S BRIEF HISTORY

- **JAN 2006** START EXPORT FINNED TUBE FROM LCB WORKSHOP UNDER ORDER RELEASED AND PRODUCTION CONTROLLED BY FIN TUBE TECHNOLOGY.
- **FEB 2008** VIPCO DECIDED TO PURCHASE AND TOOK CONTROL ALL OF FINNING EQUIPMENTS IN LCB FACILITY.
- **APR 2008** CERTIFIED OHSAS 18001: 2007 BY MASCI.
- **APR 2012** VIPCO ACQUIRED 50,000 M2 AREA LOCATED 20.4 KM FROM LAEM CHABANG PORT TO DEVELOP NEW VIPCO 5 FOR EXPANDING CAPACITY OF HRSG HARPS AND FIRE HEATER / WHRU COIL WORKS. FACILITIES ARE EXPECTED TO READY FOR OPERATION BY OCTOBER 2013.
- **MAY 2012** STARTED OVERSEAS CONSTRUCTION/INSTALLATION WORKS FOR NUI PHAO TUNGSTEN MINING IN VIETNAM.
- **JUL 2012** CERTIFIED CANADIAN WELDING BUREAU (CWB) AT MAIN WORKSHOP (VIPCO 2).
- **SEP 2013** START FABRICATION WORK AND EXPORT OF AIR PREHEATER, HOWDEN TO TAIWAN.
- **OCT 2013** VIPCO STARTED HARP FABRICATION AND BOX ASSEMBLY AT NEW ESTABLISHED NONG KHAM BRANCH WORK SHOP. SHOP CODING ASSIGNED FOR THIS WORK SHOP IS VIPCO5 WHILE LAM CHABANG BRANCH WORK SHOP WILL BE VIPCO 4 ALONE AND WILL FOCUS ONLY FIN TUBE MANUFACTURING.
- **DEC 2013** CERTIFIED U & S ASME STAMP AND CWB AT NONG KHAM SHOP (VIPCO 5).
- **JAN 2014** CERTIFIED EN1090 AND ISO 3864 BY TUV NORD AT MAIN WORKSHOP (VIPCO 2).
- **JAN 2015** VIPCO STARTED THE EXPANSION OF NONG KHAM SHOP (VIPCO 5) BY ADDING ANOTHER 9,600 M2 COVERED WORKSHOP TO SUPPORT INCREASING DEMAND IN HRSG & HEATER / WHRU MODULE BOXES.
- **JAN 2016** VIPCO STARTED THE EXPANSION OF NONG KHAM SHOP (VIPCO 5) TO BUILD 5,500 M2 NEW FINNED TUBE WORK SHOP RIGHT NEXT TO HARP & BOX SHOP. THE FIRST PHASE BUILDING WILL HAVE SPACE TO INSTALL 8 FINNING MACHINES AND WORK SHOP IS EXPECTED TO FINISH WITHIN OCT 2016.
- **APR 2018** IMPLEMENT NEW ERP TO INCREASE ORGANIZATION EFFICIENCY AND IMPROVE ACTIVITIES MANAGEMENT.
- **SEP 2019** VIPCO HAVE INSTALLED 2 MORE HIGH FREQUENCY FINNING MACHINES. THEREFORE, VIPCO HAVE TOTAL 9 FINNING MACHINES, WHICH MAKE US THE BIGGEST FINNING SHOP IN SOUTH EAST ASIA.



VIPCO4 LCB SHOP



Fin Shop Information

Outline

- 1) **Company Name** : Visavakit Patana Corp., Ltd., Laemchabang Branch (VIPCO4)
- 2) **Foundation** : Aug. 2005
- 3) **Area:** Space- 11,455 m² (79 m. W. x 145 m. L.) Building- 5,310 m²
- 4) **Manpower Status:**
 - Production Engineer : 3 Persons
 - OA/QC : 4 Persons
 - Safety : 1 persons
 - Production : 60-70 persons for 2 shifts



5) **Address:**

220-220/1 Moo 3 Toong Sukhla, Sriracha District, Chonburi 20230

Tel: +66-3840-1207 E-mail address: sales@vipco-thai.com



GENERAL COMPANY INFORMATION

COMPANY NAME, ADDRESS & CONTACT NUMBERS

URL : www.vipco-thai.com, general e-mail address: vipco@vipco-thai.com, sales@vipco-thai.com

FIN SHOP (VIPCO 4)

LAEM CHABANG BRANCH (VIPCO4: FIN SHOP)

ADDRESS:

220-220/1 MOO 3, TOONG SUKHLA, SRIRACHA DISTRICT, CHONBURI 20230 THAILAND
+ 66 (0) 38-401-207 FAX. +66 (0) 38-401-206

MAIN WORKSHOP (VIPCO 2)

VISAVAKIT PATANA CORPORATION LIMITED (VIPCO 2) MAIN WORKSHOP

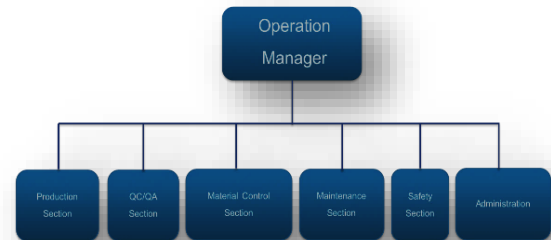
ADDRESS:

42, 52 Moo 7, Koo-Bang-Luang, Ladlumkaew, Pathumtani 12140 Thailand
+ 66 (0) 2-979-4001 to 8 Fax. +66 (0) 2-979-4010

CONTACT FOR INQUIRY AND PROPOSAL

CONTACT PERSON:

Inquiry and Proposal : sales@vipco-thai.com
Panudet Ruangsuk : r.panudet@vipco-thai.com
Sukanya Chamnanmor : c.sukanya@vipco-thai.com



PRINCIPAL PERSONNE

Managing Director	Phaithul Khositsakul	k.phaithul@vipco-thai.com
Director, Operations	Weerachart Ariyasajakul	a.weerachart@vipco-thai.com
General Manager -Production	Pasuchet Khositsakul	k.pasuchet@vipco-thai.com
General Manager, Business Development Division	Nopadon Chawegunrat	c.nopadon@vipco-thai.com
Assistant General Manager, Business Development Division	Supakrit Khositsakul	k.supakrit@vipco-thai.com
Estimating & Sales Manager	Panudet Ruangsuk	r.panudet@vipco-thai.com
Quality Assurance Manager	Nopadon Somboon	s.nopadon@vipco-thai.com
Operation Manager (LCB Shop)	Panuwat Jitakul	j.panuwat@vipco-thai.com
Purchasing Manager	Supakrit Khositsakul	k.supakrit@vipco-thai.com

PRINCIPAL BANKERS TO WHOM REFERENCE CAN BE MADE

Krung Thai Bank Limited

Branch Mgr., Tel: 66-2-585-7357 to 8, Fax: 66-2-587-4923
20 Yukul 2, Suanmali, Bangkok 10100

Export-Import Bank of Thailand

1192 Phaholyothin Rd., Payathai, Bangkok 10400
Branch Mgr., Tel: 66-2-271-3700, Fax: 66-2-271-3240

PRODUCTS & SERVICE

PRODUCTS & SERVICE

- Supply a wide range of extended heating surface tubes, Spiral (Helical) finned tube in both solid and serrated types for many industries.
 - Power generation Plant
 - Heat Recovery Stream Generator
 - Heat Exchanger
 - Economizer
 - Petrochemical Plant (WHRU, Fire Heater)

PRODUCTION FACILITIES

- Facility
 - High Frequency Spiral Fin tube Welding M/C-9 lines (MC#1-Mc#9)
 - Tube bending Machine
 - Cutting & Beveling Machines
 - Rust Preventive Coating line

Serrated type



Solid type

Capacity of finning machine:

Supply in a variety of materials with tube lengths up to 30 m.

Machine No.	Tube O.D. (Inch)	Fin thick (mm)	Fin Height (mm)	Fin Pitch (Fins / inch)	Length (m)	Material
						Fin Material:
1	1.5" - 6.625"	0.8 - 2.7	9 - 32	1.5 - 7.6	23.2 m.	CS A1008 SPCC-SD
2	2" - 10.75"	0.8 - 2.7	9 - 32	1.5 - 7.6	21.3 m.	409SS (11 Cr), 410SS (13 Cr)
3	1" - 4.5"	0.8 - 2.7	9 - 32	1.5 - 7.6	26 m.	304SS, 309SS/310SS
						Tube Material:
4	1" - 2.875"	0.8 - 2.7	9 - 32	1.5 - 7.6	23.2 m.	CS, T11, T22 & Tr91
5	1" - 2.875"	0.8 - 2.7	9 - 32	1.5 - 7.6	26 m.	P11, P22, P5 , P9 & P91
6	1" - 4.5"	0.8 - 2.7	9 - 32	1.5 - 7.6	26 m.	304SS , 316SS , 321SS
7	1" - 6.625"	0.8 - 2.7	9 - 32	1.5 - 7.6	30 m.	,347SS , 347H
8	1" - 4.5"	0.8 - 2.5	8 - 19 (Solid) 8 - 25.4 (Serrated)	1.0 - 8.63	27 m.	Duplex SS, 2205 Incoloy 800H
9	1" - 4.5"	0.8 - 2.5	8-19 (Solid)8-25.4 (Serrated)	1.0 - 8.63	27 m.	

Products

Solid type and serrated type



Packing

Local Transport and
Packing for Export





Fin Material

Country of origin can be Thailand, Vietnam, Malaysia, Korea, and Taiwan.



PRODUCT & SERVICE

2. Center/Intermediate weld before finning to match with required fin length.
This is to save fabrication time and increase heating surface.



Finning Machine

High frequency Spiral Fin tube
Welding M/C-9 lines





ALSTOM POWER
BIH PTTGC
BornCanada/ONQUEST
BP Bechtel CMIEPTI
Chevron Phillips
Chiyoda Exxon
EGAT

FOSTER WHEELER FEI
G.E. ITTS.p.A JGC
KIRCHNER ITALIA
KTICORP./TECHNIP
LUMMUS (CBI)

Nooter/Eriksen
PCD/HEURTEY
RCRENERGY
SELASFLUID /Linde
ThaiOil TULSA HEATER
VOGT POWER INC



CUSTOMER LIST >>>

VIPCO AS APPROVED VENDOR/SUBVENDOR

GENERAL

Since started fining operation in year 2006, VIPCO has undertaken not less than 2,800,000 finned tubes for power generation, oil refinery, petrochemical and oil & gas industry. Project references are as seen from the following pages.



PROJECT EXPERIENCE LIST : FINNED TUBE



No.	Year	Job No.	Customer Name	Project Name	Q'ty	Tubes :	Tube Length	Fins :	Coating Type
1	2005	20059001	Born Heaters Canada ULC	Finned Tube	120	4.500" O.D. SA-106-B (24 Tubes.) 6.625" O.D. SA-106-B (96 Tubes.)	5.9 m.	0.105" thick. X 1.000" height. CS Sol. 3.2 fins/in. 0.050" thick. X 1.000" height. CS Sol. 5.0 fins/in.	Rust Veto 377T
2	2005	20059002	Born Heaters Canada ULC	Finned Tube	70	6.625" O.D. SA-106-B	6.3 m.	0.050" thick. X 1.000" height. CS Sol. 5.0 fins/in. 0.050" thick. X 0.750" height. CS Sol. 3.0 fins/in. 0.050" thick. X 0.500" height. CS Sol. 2.0 fins/in.	Rust Veto 377T
3	2005	20059003	ME Engineering UK	Finned Tube	474	1.660" O.D. SA-106-B	4.6 m.	0.050" thick. X 0.625" height. CS Serr. 5.0 fins/in.	Rust Veto 377T
4	2005	20059004	Born Heaters Canada ULC	Finned Tube	148	6.625" O.D. SA-106-B	6.5 m.	0.105" thick. X 0.750" height. CS Sol. 3.0 fins/in.	Rust Veto 377T
5	2005	20059005	Nooter Eriksen	Finned Tube	1,064	2.000" O.D. SA-213-T91 (674 Tubes.) 2.250" O.D. SA-213-T91 (390 Tubes.)	22.2 m.	0.047" thick. X 0.625" height. 409-SS Serr. 4.6 fins/in. 0.047" thick. X 0.750" height. 409-SS Serr. 5.6 fins/in.	Rust Veto 377T
6	2005	20059006	Foster Wheeler Engineering	Finned Tube	658	3.500" O.D. SA-106-B (468 Tubes.) 3.500" O.D. SA-312-304 (190 Tubes.)	10.5 m.	0.050" thick. X 1.000" height. CS Serr. 5.0 fins/in. 0.050" thick. X 0.625" height. CS Serr. 5.0 fins/in.	Rust Veto 377T
7	2006	20069001	Asia Energy Eng.	Finned Tube	10	1.500" O.D. SA-192	18.9 m.	0.040" thick. X 0.500" height. CS Sol. 5.6 fins/in.	Rust Veto 377T
8	2006	20069002	KTI Corporation	Finned Tube	112	5.563" O.D. SA-312-TP316	8.5 m.	0.105" thick. X 0.750" height. 409-SS Sol. 2.0 fins/in.	Rust Veto 377T
9	2006	20069003	Vogt Power International	Finned Tube	6,366	2.000" O.D. SA-213-T91 (396 Tubes.) 2.000" O.D. SA-178-C (532 Tubes.) 1.500" O.D. SA-213-T91 (504 Tubes.) 1.500" O.D. SA-213-T11 (168 Tubes.) 1.500" O.D. SA-178-A (2,378 Tubes.) 1.500" O.D. SA-178-C (2,148 Tubes.) 1.500" O.D. SA-789 (240 Tubes.)	20.7 m.	0.050" thick. X 0.625" height. 409-SS Serr. 5.8 fins/in. 0.050" thick. X 0.625" height. CS Serr. 0.050" thick. X 0.500" height. 409-SS Serr. 0.050" thick. X 0.500" height. CS Serr. 0.050" thick. X 0.375" height. 409-SS Sol. 5.3 fins/in. 0.050" thick. X 0.375" height. CS Sol. 3.3 fins/in.	Rust Veto 377T
10	2006	20069004	Boustead International Heaters	Finned Tube	56	5.563" O.D. SA-312-TP316L	5.0 m.	0.050" thick. X 1.000" height. CS Sol. 5.0 fins/in. 0.050" thick. X 0.500" height. CS Sol. 3.0 fins/in. 0.050" thick. X 0.375" height. CS Sol. 2.0 fins/in.	Rust Veto 377T
11	2006	20069006	Boustead International Heaters	Finned Tube	1,240	6.625" O.D. SA-106-B (120 Tubes.) 6.625" O.D. SA-312-304H (28 Tubes.) 4.500" O.D. SA-106-B (216 Tubes.) 2.875" O.D. SA-106-B (576 Tubes.) 2.875" O.D. SA-335-P11 (300 Tubes.)	9.9 m.	0.050" thick. X 0.750" height. CS Serr. 5.0 fins/in. 0.050" thick. X 0.750" height. 409-SS Serr. 5.0 fins/in. 0.050" thick. X 0.750" height. 304-SS Serr. 5.0 fins/in. 0.050" thick. X 0.375" height. CS Serr. 5.0 fins/in.	Rust Veto 377T
12	2006	20069007	Boustead International Heaters	Finned Tube	216	6.625" O.D. SA-106-B	10.6 m.	0.050" thick. X 1.000" height. CS Serr. 5.0 fins/in. 0.050" thick. X 0.750" height. CS Serr. 5.0 fins/in. 0.050" thick. X 0.500" height. CS Serr. 4.0 fins/in.	Rust Veto 377T
13	2006	20069008	Boustead International Heaters	Finned Tube	2,427	1.900" O.D. SA-106-B (610 Tubes.) 1.900" O.D. SA-312-304H (588 Tubes.) 1.660" O.D. SA-106-B (225 Tubes.) 1.660" O.D. SA-312-304H (1,004 Tubes.)	8.2 m.	0.059" thick. X 0.590" height. CS Serr. 4.2 fins/in. 0.059" thick. X 0.590" height. 304-SS Serr. 4.2 fins/in. 0.059" thick. X 0.500" height. CS Serr. 4.2 fins/in. 0.059" thick. X 0.500" height. 304-SS Serr. fins/in.	Rust Veto 377T

No.	Year	Job No.	Customer Name	Project Name	Q'ty	Tubes :	Tube Length	Fins :	Coating Type
14	2006	20069009	Alloy Metals Co.,Ltd.(AMC)	Finned Tube	50	2.000" O.D. SA-178-A	6.2 m.	0.060" thick. X 0.750" height. CS Sol. 3.0 fins/in.	Rust Veto 377T
15	2006	20069010	NEM bv	Finned Tube	1,112	1.500" O.D. SA-213-T22 (152 Tubes.) 1.500" O.D. SA-192 (600 Tubes.) 1.050" O.D. SA-192 (360 Tubes.)	12.7 m.	0.050" thick. X 0.500" height. CS Serr. 5.0 fins/in. 0.050" thick. X 0.500" height. 409-SS Sol. 2.8 fins/in. 0.050" thick. X 0.236" height. CS Sol. 1.7 fins/in. 0.050" thick. X 0.236" height. 409-SS Sol. 1.4 fins/in.	Rust Veto 377T
16	2006	20069013	Petro-Chem Development Co.,In	Finned Tube	390	8.625" O.D. SA-106-B (94 Tubes.) 8.625" O.D. SA-335-P9 (32 Tubes.) 6.625" O.D. SA-106-B (32 Tubes.) 6.625" O.D. SA-335-P9 (192 Tubes.) 6.625" O.D. SA-312-TP321H (40 Tubes.)	10.9 m.	0.060" thick. X 1.000" height. 409-SS Sol. 0.050" thick. X 1.000" height. 409-SS Sol. 0.050" thick. X 1.000" height. CS Sol. 0.050" thick. X 0.750" height. 409-SS Sol. 0.050" thick. X 0.750" height. CS Sol. 0.050" thick. X 0.500" height. 409-SS Sol.	Rust Veto 377T
17	2006	20069014	Petro-Chem Development Co.,In	Finned Tube	88	8.625" O.D. SA-106-B (32 Tubes.) 6.625" O.D. SA-106-B (56 Tubes.)	7.2 m.	0.050" thick. X 1.000" height. 409-SS Sol.	Rust Veto 377T
18	2006	20069015	Heurtey Petrochem	Finned Tube	498	10.750" O.D. SA-312-347H (150 Tubes.) 8.625" O.D. SA-312-347H (96 Tubes.) 6.625" O.D. SA-312-347H (36 Tubes.) 6.625" O.D. SA-335-P9 (216 Tubes.)	10.8 m.	0.060" thick. X 1.000" height. CS Sol. 0.060" thick. X 0.500" height. 409-SS Sol. 0.050" thick. X 1.000" height. CS Sol. 0.050" thick. X 1.000" height. 409-SS Sol. 0.050" thick. X 0.750" height. 409-SS Sol.	Rust Veto 377T
19	2006	20069016	Petro-Chem Development Co.,In	Finned Tube	660	8.625" O.D. SA-106-B (96 Tubes.) 6.625" O.D. SA-106-B (204 Tubes.) 6.625" O.D. SA-335-P11 (360 Tubes.)	11.9 m.	0.105" thick. X 0.750" height. CS Sol. 0.105" thick. X 0.500" height. CS Sol. 0.050" thick. X 1.000" height. CS Sol. 5.0 fins/in.	Rust Veto 377T
20	2006	20069017	FURNACE ENGINEERING INC.	Finned Tube	48	6.625" O.D. SA-106-B	8.4 m.	0.050" thick. X 1.875" height. CS Sol.	Rust Veto 377T
21	2006	20069018	Technip KTI SpA	Finned Tube	1,152	6.625" O.D. SA-106-B (180 Tubes.) 5.563" O.D. SA-106-B (72 Tubes.) 4.500" O.D. SA-106-B (780 Tubes.) 4.500" O.D. SA-335-P11 (120 Tubes.)	12.3 m.	0.098" thick. X 0.750" height. CS Sol. 0.098" thick. X 0.590" height. CS Sol. 0.050" thick. X 1.000" height. CS Sol. 0.050" thick. X 0.750" height. CS Sol. 0.050" thick. X 0.598" height. CS Sol.	Rust Veto 377T
22	2006	20069019	Foster Wheeler Engineering	Finned Tube	674	5.563" O.D. SA-335-P11 (97 Tubes.) 4.500" O.D. SA-106-B (577 Tubes.)	11.0 m.	0.050" thick. X 1.000" height. CS Serr. 0.050" thick. X 0.750" height. 409-SS Serr. 0.050" thick. X 0.500" height. 409-SS Serr.	Rust Veto 377T
23	2006	20069020	KTI Corporation	Finned Tube	56	4.500" O.D. SA-335-P9	8.8 m.	0.050" thick. X 1.000" height. 409-SS Sol. 4.0 fins/in. 0.050" thick. X 1.000" height. CS Sol. 4.0 fins/in. 0.050" thick. X 0.750" height. 409-SS Sol. 4.0 fins/in.	Rust Veto 377T
24	2006	20069021	Foster Wheeler Engineering	Finned Tube	196	8.625" O.D. SA-106-B (167 Tubes.) 8.625" O.D. SA-312-321 (29 Tubes.)	7.2 m.	0.098" thick. X 1.000" height. 409-SS Sol.	Rust Veto 377T
25	2006	20069022	Petro-Chem Development Co.,In	Finned Tube	10	6.625" O.D. SA-335-P11	4.2 m.	0.050" thick. X 1.000" height. CS Sol. 5.0 fins/in. 0.050" thick. X 1.000" height. 409-SS Sol. 5.0 fins/in.	Rust Veto 377T
26	2006	20069023	Kirchner Italia S.p.A.	Finned Tube	408	4.500" O.D. SA-106-B (360 Tubes.) 4.500" O.D. SA-335-P22 (48 Tubes.)	19.4 m.	0.050" thick. X 0.500" height. 409-SS Sol. 0.050" thick. X 0.750" height. CS Sol.	Rust Veto 377T
27	2006	20069024	ITT S.P.A.	Finned Tube	72	4.500" O.D. SA-335-P22	12.0 m.	0.050" thick. X 0.750" height. 409-SS Sol.	Rust Veto 377T
28	2006	20069026	J.J. Advanced	Finned Tube	250	2.000" O.D. SA-179	6.2 m.	0.059" thick. X 0.750" height. CS Sol. 3.0 fins/in.	Rust Veto 377T

No.	Year	Job No.	Customer Name	Project Name	Q'ty	Tubes :	Tube Length	Fins :	Coating Type
29	2006	20069027	Boustead International Heaters.	Finned Tube	108	6.625" O.D. SA-106-B	10.5 m.	0.050" thick. X 0.500" height. CS Sol. 0.050" thick. X 0.826" height. CS Sol. 0.050" thick. X 1.000" height. CS Sol.	Rust Veto 377T
30	2006	20069028	Born Heaters Canada ULC	Finned Tube	102	4.500" O.D. SA-335-P22	13.4 m.	0.060" thick. X 1.000" height. CS Sol. 5.0 fins/in. 0.098" thick. X 0.750" height. 409-SS Sol. 3.0 fins/in. 0.098" thick. X 0.750" height. CS Sol. 2.0 fins/in.	Rust Veto 377T
31	2006	20069029	Petro-Chem Development Co.,In	Finned Tube	40	8.625" O.D. SA-335-P9	7.4 m.	0.050" thick. X 1.000" height. CS Sol. 5.0 fins/in. 0.050" thick. X 1.000" height. 409-SS Sol. 5.0 fins/in.	Rust Veto 377T
32	2006	20069032	Vogt Power International	Finned Tube	18,655	1.500" O.D. SA-192 (7,243 Tubes.) 1.500" O.D. SA-210-A1 (6,272 Tubes.) 1.500" O.D. SA-213-T22 (402 Tubes.) 1.500" O.D. SA-213-T91 (2,112 Tubes.) 2.000" O.D. SA-213-T22 (498 Tubes.) 2.000" O.D. SA-213-T91 (2,128 Tubes.)	20.9 m.	0.040" thick. X 0.625" height. 409-SS Serr. 6.3 fins/in. 0.040" thick. X 0.625" height. CS Serr. 6.0 fins/in. 0.040" thick. X 0.500" height. 409-SS Serr. 6.9 fins/in. 0.040" thick. X 0.500" height. CS Serr. 6.0 fins/in. 0.040" thick. X 0.500" height. 409-SS Sol. 6.9 fins/in. 0.040" thick. X 0.375" height. 409-SS Serr. 4.4 fins/in.	Rust Veto 377T
33	2006	20069033	Petro-Chem Development Co.,In	Finned Tube	336	4.500" O.D. SA-106-B (288 Tubes.) 4.500" O.D. SA-335-P11 (48 Tubes.)	12.7 m.	0.050" thick. X 0.750" height. 409-SS Sol. 5.0 fins/in. 0.050" thick. X 0.500" height. 409-SS Sol. 3.0 fins/in.	Rust Veto 377T
34	2006	20069034	Boustead International Heaters	Finned Tube	226	6.625" O.D. SA-335-P11	12.2 m.	0.059" thick. X 1.000" height. CS Sol. 4.0 fins/in. 0.059" thick. X 1.000" height. 409-SS Sol. 4.0 fins/in.	Rust Veto 377T
35	2006	20069035	ABB Lummus Heat Transfer	Finned Tube	2,980	6.625" O.D. SA-312-304H (168 Tubes.) 6.625" O.D. SA-106-B (420 Tubes.) 6.625" O.D. SA-335-P22 (40 Tubes.) 2.874" O.D. SA-106-B (1,680 Tubes.) 2.874" O.D. SA-335-P22 (336 Tubes.) 2.874" O.D. SA-335-P91 (336 Tubes.)	11.8 m.	0.059" thick. X 0.500" height. CS Sol. 4.2 fins/in. 0.059" thick. X 0.500" height. 409-SS Sol. 4.2 fins/in. 0.059" thick. X 0.500" height. 304-SS Sol. 3.0 fins/in. 0.059" thick. X 0.750" height. CS Sol. 4.2 fins/in.	Rust Veto 377T
36	2007	20079002	Boustead International Heaters	Finned Tube	48	6.625" O.D. SA-106-B	12.0 m.	0.050" thick. X 0.750" height. CS Serr. 3.0 fins/in. 0.050" thick. X 1.000" height. CS Serr. 5.0 fins/in.	Rust Veto 377T
37	2007	20079006	Petro-Chem Development Co.,In	Finned Tube	976	8.625" O.D. SA-106-B (400 Tubes.) 5.563" O.D. SA-106-B (576 Tubes.)	6.7 m.	0.050" thick. X 1.000" height. CS Sol. 0.050" thick. X 1.000" height. 409-SS Sol. 0.050" thick. X 0.500" height. CS Sol.	Rust Veto 377T
38	2007	20079007	KTI Corporation	Finned Tube	1,208	4.500" O.D. SA-335-P22 (696 Tubes.) 3.500" O.D. SA-106-B (512 Tubes.)	10.7 m.	0.060" thick. X 0.500" height. 409-SS Sol. 0.060" thick. X 0.625" height. CS Sol.	Rust Veto 377T
39	2007	20079008	Petro-Chem Development Co.,In	Finned Tube	92	5.563" O.D. SA-106-B (64 Tubes.) 6.625" O.D. SA-106-B (28 Tubes.)	5.8 m.	0.050" thick. X 1.000" height. 409-SS Sol.	Rust Veto 377T
40	2007	20079009	Boustead International Heaters.	Finned Tube	72	6.625" O.D. SA-106-B	5.4 m.	0.050" thick. X 1.000" height. CS Sol. 0.050" thick. X 0.750" height. CS Sol. 0.050" thick. X 0.500" height. CS Sol.	Rust Veto 377T
41	2007	20079010	Boustead International Heaters.	Finned Tube	148	5.563" O.D. SA-335-P9 (128 Tubes.) 4.500" O.D. SA-106-B (20 Tubes.)	10.1 m.	0.050" thick. X 1.000" height. CS Sol. 0.050" thick. X 0.500" height. 409-SS Sol.	Rust Veto 377T
42	2007	20079011	Boustead International Heaters.	Finned Tube	109	6.625" O.D. SA-106-B	12.0 m.	0.050" thick. X 1.000" height. CS Sol. 0.050" thick. X 0.625" height. CS Sol. 0.050" thick. X 0.500" height. CS Sol.	Rust Veto 377T
43	2007	20079012	KTI Corporation	Finned Tube	232	5.563" O.D. SA-106-B	10.2 m.	0.050" thick. X 1.000" height. CS Sol.	Rust Veto 377T

No.	Year	Job No.	Customer Name	Project Name	Q'ty	Tubes :	Tube Length	Fins :	Coating Type
44	2007	20079014	Boustead International Heaters.	Finned Tube	98	1.900" O.D. SA-106-B	6.0 m.	0.059" thick. X 0.591" height. CS Serr.	Rust Veto 377T
45	2008	J-F1001	Austrian Energy & Environment	Sino Iron Project C80089	4,148	1.500" O.D. SA-213-T22 (476 Tubes.) 1.500" O.D. SA-210-A1 (3,672 Tubes.)	13.8 m.	0.039" thick. X 0.512" height. 409-SS Serr. 6.6 fins/in. 0.039" thick. X 0.630" height. 409-SS Serr. 6.6 fins/in. 0.039" thick. X 0.630" height. CS Serr. 6.6 fins/in.	Rust Veto 377T
46	2008	J-F1003	Vogt Power International	Connectiv	17,370	2.000" O.D. SA-210-A1 (486 Tubes.) 1.500" O.D. SA-213-T22 (594 Tubes.) 1.500" O.D. SA-213-T11 (1,188 Tubes.) 1.500" O.D. SA-210-A1 (15,102 Tubes.)	14.0 m.	0.040" thick. X 0.500" height. 409-SS Sol. 7.2 fins/in. 0.040" thick. X 0.625" height. CS Serr. 7.3 fins/in.	Rust Veto 377T
47	2008	J-F1004	Foster Wheeler Service Thailand	Foster Wheeler	510	1.500" O.D. SA-213-T22	14.5 m.	0.039" thick. X 0.530" height. CS Serr. 6.3 fins/in.	Rust Veto 377T
48	2008	J-F1005	Kinetics Technology Intenational Corporation	Motiva Crude Expansion Project Finned Tube	72	8.625" O.D. SA-335-P9 (48 Tubes.) 6.625" O.D. SA-106-B (24 Tubes.)	15.5 m.	0.050" thick. X 0.750" height. 409-SS Sol. 5.0 fins/in. 0.050" thick. X 1.000" height. CS 5.0 fins/in.	Rust Veto 377T
49	2008	J-F1007	Tulsa Heatees Inc.	Tulsa Heaters Inc./WHRU	384	3.500" O.D. SA-106-B	7.4 m.	0.075" thick. X 0.750" height. CS Serr. 4.5 fins/in. 0.075" thick. X 0.750" height. CS Serr. 3.0 fins/in.	Rust Veto 377T
50	2009	J-F1006	Foster Wheeler Service Thailand	Pacific Corp - ECONOMIZER	15,723	1.750" O.D. SA-210-A1	7.8 m.	0.060" thick. X 0.750" height. CS Sol. 2.4 fins/in.	Rust Veto 377T
51	2009	J-F1008	Vogt Power International	Richmond County/17442	19,696	2.250" O.D. SA-213-T91 (304 Tubes.) 2.250" O.D. SA-213-T22 (304 Tubes.) 2.000" O.D. SA-213-T91 (608 Tubes.) 2.000" O.D. SA-213-T22 (352 Tubes.) 1.500" O.D. SA-213-T91 (1,056 Tubes.) 1.500" O.D. SA-210-C (17,072 Tubes.)	20.5 m.	0.040" thick. X 0.500" height. 409-SS Sol. 3.1 fins/in. 0.040" thick. X 0.500" height. 409-SS Serr. 6.9 fins/in. 0.040" thick. X 0.500" height. CS Serr. 6.9 fins/in. 0.040" thick. X 0.375" height. 409-SS Serr. 4.5 fins/in. 0.040" thick. X 0.375" height. CS Serr. 4.0 fins/in.	Rust Veto 377T
52	2009	J-F1009	Vogt Power International	Cane Island/17443	6,366	2.000" O.D. SA-213-T91 (396 Tubes.) 2.000" O.D. SA-178-C (532 Tubes.) 1.500" O.D. SA-213-T91 (504 Tubes.) 1.500" O.D. SA-213-T22 (168 Tubes.) 1.500" O.D. SA-178-A (2,618 Tubes.) 1.500" O.D. SA-178-C (2,148 Tubes.)	20.5 m.	0.050" thick. X 0.625" height. 409-SS Serr. 5.0 fins/in. 0.050" thick. X 0.625" height. CS Serr. 6.0 fins/in. 0.050" thick. X 0.500" height. 409-SS Sol. 4.8 fins/in. 0.050" thick. X 0.500" height. 409-SS Serr. 6.0 fins/in. 0.050" thick. X 0.500" height. CS Serr. 6.0 fins/in. 0.050" thick. X 0.375" height. 409-SS Sol. 6.0 fins/in. 0.050" thick. X 0.375" height. CS Sol. 6.0 fins/in.	Rust Veto 377T
53	2009	J-F1010	Selas Fluid Processing Corporation (SFPC)	Petrologistics Finned Tube	162	4.500" O.D. SA-106-B (90 Tubes.) 6.625" O.D. SA-335-P11 (72 Tubes.)	13.8 m.	0.050" thick. X 1.000" height. CS Serr. 5.0 fins/in. 0.050" thick. X 1.000" height. 409-SS Serr. 5.0 fins/in. 0.050" thick. X 1.000" height. 304-SS Serr. 5.0 fins/in.	Rust Veto 377T
54	2009	J-F1011	Petro-Chem Development Co.,In	F-08-1951	40	4.500" O.D. SA-335-P9	9.8 m.	0.105" thick. X 0.750" height. 409-SS Sol. 4.0 fins/in.	Rust Veto 377T
55	2009	J-F1012	Boustead International Heaters.	600-240-03342 WHRU	640	1.900" O.D. SA-106-B (96 Tubes.) 1.660" O.D. SA-106-B (544 Tubes.)	7.7 m.	0.050" thick. X 0.275" height. CS Sol. 3.5 fins/in. 0.050" thick. X 0.750" height. CS Serr. 5.0 fins/in.	Rust Veto 377T
56	2009	J-F1013	Tulsa Heatees Inc.	Tulsa Heaters Inc.	102	4.000" O.D. SA-106-B (70 Tubes.) 6.625" O.D. SA-106-B (32 Tubes.)	7.5 m.	0.050" thick. X 0.750" height. CS Sol. 5.0 fins/in. 0.050" thick. X 1.000" height. CS Sol. 5.0 fins/in.	Rust Veto 377T
57	2009	J-F1014	Boustead International Heaters.	WHRU'S Petrobras P56	19	1.660" O.D. SA-213-T11	4.8 m.	0.050" thick. X 0.500" height. 409-SS Serr. 5.0 fins/in.	Rust Veto 377T
58	2009	J-F1015	Born Heaters Canada ULC	U-9102 Hot Oil Heater	8	6.625" O.D. SA-106-B	5.9 m.	0.105" thick. X 0.750" height. CS Sol. 3.0 fins/in.	Rust Veto 377T

No.	Year	Job No.	Customer Name	Project Name	Q'ty	Tubes :	Tube Length	Fins :	Coating Type
59	2009	J-F1016	German-Thai Boiler Engineering Cooperation Ltd.	Finned Tube for Thai Oil Project	920	1.500" O.D. SA-192	11.8 m.	0.049" thick. X 0.630" height. CS Serr. 5.1 fins/in.	Rust Veto 377T
60	2009	J-F1017	Kirchner Italia S.p.A.	GNL 32-B5441	72	6.625" O.D. SA-106-B	12.6 m.	0.059" thick. X 0.984" height. 409-SS Sol. 4.0 fins/in.	Rust Veto 377T
61	2009	J-F1019	Boustead International Heaters.	Darwin LNG -Australia (609/240)	1,754	1.660" O.D. SA-355-P22 (220 Tubes) 1.900" O.D. SA-355-P22 (1,308 Tubes) 1.900" O.D. SA-312-TP304 (226 Tubes)	10.0 m.	0.050" thick. X 0.500" height. 409-SS Serr. 6.0 fins/in.	Rust Veto 377T
62	2009	J-F1020	FURNACE ENGINEERING INC.	Abu Dhabi Oil/H-120	48	4.500" O.D. JIS G3467 STF410	8.7 m.	0.050" thick. X 0.750" height. CS Sol. 4.0 fins/in.	Rust Veto 377T
63	2009	J-F1021	FURNACE ENGINEERING INC.	1700 Procon/BPC.LTE-HDT PJ	28	6.625" O.D. SA-312-TP347H	4.7 m.	0.050" thick. X 1.000" height. CS Sol. 5.0 fins/in.	Rust Veto 377T
64	2009	J-F1022	Boustead International Heaters.	610/240 WHRU 18-ML-02	628	2.375" O.D. SA-106-B	7.8 m.	0.051" thick. X 0.630" height. CS Sol. 4.0 fins/in. 0.051" thick. X 0.750" height. CS Sol. 5.0 fins/in.	Rust Veto 377T
65	2010	J-F1023	FURNACE ENGINEERING INC.	AR4 PJ - IRAN	60	6.625" O.D. SA-312-TP321	8.9 m.	0.050" thick. X 1.000" height. 304-SS Sol. 5.0 fins/in.	Rust Veto 377T
66	2010	J-F1018	Kirchner Italia S.p.A.	Esfahan-B5008	52	5.563" O.D. SA-213-TP321H (20 Tubes) 6.625" O.D. SA-213-TP347H (32 Tubes)	4.7 m. 14.0 m.	0.059" thick. X 1.000" height. CS Sol. 5.0 fins/in. 0.051" thick. X 1.000" height. 409-SS Sol. 5.0 fins/in.	Rust Veto 377T
67	2010	J-F1024	Vogt Power International	IRPC Project	10,272	1.500" O.D. SA-213-T22 (384 Tubes) 1.500" O.D. SA-213-T11 (384 Tubes) 1.500" O.D. SA-210-A1 (9,504 Tubes)	12.6 m.	0.040" thick. X 0.375" height. 409-SS Sol. 5.0 fins/in. 0.040" thick. X 0.500" height. CS Serr. 7.3 fins/in.	Rust Veto 377T
68	2010	J-F1025	Boustead International Heaters.	614-240 Regen Gas & Hot oil Heater	330	5.563" O.D. SA-106-B (120 Tubes) 6.625" O.D. SA-106-B (210 Tubes)	6.6 m.	0.059" thick. X 0.630" height. CS Sol. 3.0 fins/in. 0.059" thick. X 0.630" height. CS Serr. 3.0 fins/in. 0.059" thick. X 0.984" height. CS Sol. 3.0 fins/in. 0.059" thick. X 0.984" height. CS Serr. 3.0 fins/in.	Rust Veto 377T
69	2010	J-F1026	Petro-Chem Development Co.,In	F-09-1968 (Manglore - India)	23	8.625" O.D. SA-312-TP321	7.4 m.	0.051" thick. X 1.000" height. CS Sol. 5.0 fins/in. 0.051" thick. X 1.000" height. 409-SS Sol. 5.0 fins/in.	Rust Veto 377T
70	2010	J-F1027	Boustead International Heaters.	616-240 Gorgon / Barrow Island	180	6.625" O.D. SA-106-B	7.3 m.	0.059" thick. X 1.000" height. CS Sol. 5.0 fins/in.	Rust Veto 377T
71	2010	J-F1028	Petro-Chem Development Co.,In	1550F1-08 (F-09-1973) Hexanediol (Rayong)	32	6.625" O.D. SA-106-B	6.3 m.	0.050" thick. X 1.000" height. CS Sol. 5.0 fins/in. 0.050" thick. X 1.000" height. 409-SS Sol. 5.0 fins/in.	Rust Veto 377T
72	2010	J-F1029	Lotus Hitemp Metals Co.,Ltd.	Glow A037-12-09	513	1.500" O.D. SA-213-T22	14.9 m.	0.039" thick. X 0.530" height. CS Serr. 6.3 fins/in.	Rust Veto 377T
73	2010	J-F1030	Boustead International Heaters.	619-240	1,896	6.625" O.D. SA-106-B (520 Tubes) 4.500" O.D. SA-106-B (72 Tubes) 4.000" O.D. SA-335-P22 (120 Tubes) 3.500" O.D. SA-106-B (1,088 Tubes)	10.4 m. 7.7 m. 11.2 m. 11.0 m.	0.059" thick. X 1.000" height. 304-SS Sol. 5.0 fins/in. 0.059" thick. X 0.500" height. 304-SS Sol. 5.0 fins/in. 0.059" thick. X 1.000" height. CS Sol. 5.0 fins/in. 0.059" thick. X 0.750" height. CS Sol. 4.0 fins/in.	Rust Veto 377T
73	2010	J-F1030	Boustead International Heaters.	619-240	3,500	3.500" O.D. SA-335-P22 (96 Tubes)	11.0 m.	0.059" thick. X 0.500" height. CS Sol. 5.0 fins/in. 0.059" thick. X 0.295" height. CS Sol. 2.0 fins/in. 0.051" thick. X 1.000" height. 409-SS Sol. 5.0 fins/in. 0.051" thick. X 0.630" height. 409-SS Sol. 5.0 fins/in. 0.051" thick. X 1.000" height. CS Sol. 5.0 fins/in. 0.051" thick. X 0.750" height. CS Sol. 5.0 fins/in. 0.051" thick. X 0.375" height. CS Sol. 2.0 fins/in.	Rust Veto 377T

No.	Year	Job No.	Customer Name	Project Name	Q'ty	Tubes :	Tube Length	Fins :	Coating Type
74	2010	J-F1031	CMI-THAI Service Co.,Ltd.	Thai oil Project	75	4.500" O.D. SA-106-B (60 Tubes) 6.625" O.D. SA-106-B (15 Tubes)	13.1 m.	0.050" thick. X 0.512" height. CS Sol. 4.3 fins/in. 0.050" thick. X 0.874" height. CS Sol. 5.0 fins/in.	Rust Veto 377T
75	2010	J-F1033	Kinetics Technology Intenational Corporation	For Thai Oil	14	5.563" O.D. SA-312-TP347	3.0 m.	0.050" thick. X 1.000" height. CS Sol. 4.0 fins/in. 0.050" thick. X 1.000" height. 409-SS Sol. 4.0 fins/in.	Rust Veto 377T
76	2010	J-F1034	Boustead International Heaters.	624/240	756	1.660" O.D. SA-355-P11	3.5 m.	0.051" thick. X 0.630" height. 409-SS Serr. 5.0 fins/in.	Rust Veto 377T
77	2010	J-F1035	Vogt Power International	VPI-17451(EI Centro)	4,776	1.500" O.D. SA-213-T91 (280 Tubes) 1.500" O.D. SA-213-T11 (140 Tubes) 1.500" O.D. SA-210-C (1,980 Tubes) 1.500" O.D. SA-192 (2,376 Tubes)	15.6 m.	0.040" thick. X 0.375" height. 409-SS Sol. 5.5 fins/in. 0.040" thick. X 0.500" height. 409-SS Serr. 7.3 fins/in. 0.040" thick. X 0.500" height. CS Serr. 7.3 fins/in.	Rust Veto 377T
78	2010	J-F1036	Boustead International Heaters.	623/240	105	6.625" O.D. SA-106-B	6.5 m.	0.059" thick. X 0.630" height. CS Sol. 3.0 fins/in. 0.059" thick. X 0.630" height. CS Serr. 3.0 fins/in. 0.059" thick. X 0.984" height. CS Sol. 3.0 fins/in. 0.059" thick. X 0.984" height. CS Serr. 3.0 fins/in.	Rust Veto 377T
79	2010	J-F1037	Petro-Chem Development Co.,In	F-10-1980	1,408	4.500" O.D. SA-106-B	9.2 m.	0.051" thick. X 0.630" height. 409-SS Sol. 3.0 fins/in. 0.051" thick. X 0.748" height. 409-SS Sol. 3.5 fins/in. 0.051" thick. X 0.748" height. CS Sol. 4.0 fins/in.	Rust Veto 377T
80	2010	J-F1040	Lummus Technology Heat Transfer	492/P253025	192	5.563" O.D. SA-335-P9	9.1 m.	0.051" thick. X 0.752" height. 11-13Cr. Sol. 4.0 fins/in.	Rust Veto 377T
81	2011	J-F1032	Kinetics Technology Intenational Corporation	KJ1023 Finned Tube	632	4.500" O.D. SA-106-B (296 Tubes) 4.500" O.D. SA-213-TP304 (32 Tubes) 4.500" O.D. SA-312-TP304 (16 Tubes) 4.500" O.D. SA-335-P22 (48 Tubes) 5.563" O.D. SA-213-TP304H (48 Tubes) 5.563" O.D. SA-213-TP347 (56 Tubes) 5.563" O.D. SA-312-TP304H (96 Tubes) 6.625" O.D. SA-335-P11 (40 Tubes)	9.9 m. 10.2 m. 10.5 m. 10.2 m. 8.3 m. 11.5 m. 11.5 m. 7.2 m.	0.051" thick. X 0.874" height. CS Sol. 5.0 fins/in. 0.051" thick. X 1.000" height. CS Sol. 5.0 fins/in. 0.051" thick. X 1.000" height. 11-13Cr. Sol. 5.0 fins/in. 0.051" thick. X 0.250" height. 18Cr-8Ni Sol. 2.2 fins/in. 0.051" thick. X 0.500" height. 18Cr-8Ni Sol. 4.4 fins/in. 0.051" thick. X 0.626" height. 18Cr-8Ni Sol. 2.8 fins/in. 0.051" thick. X 0.750" height. 18Cr-8Ni Sol. 2.9 fins/in. 0.051" thick. X 1.000" height. 18Cr-8Ni Sol. 5.0 fins/in.	Rust Veto 377T
82	2011	J-F1038	Selas Fluid Processing Corporatiion (SFPC)	Jubail - Convection	398	4.000" O.D. SA-335-P11 (80 Tubes) 4.500" O.D. SA-335-P11 (60 Tubes) 5.563" O.D. SA-312-TP321 (60 Tubes) 6.625" O.D. SA-335-P9 (168 Tubes) 8.625" O.D. SA-376-TP347H (30 Tubes)	6.2 m. 7.1 m. 4.5 m. 7.6 m. 8.2 m.	0.050" thick. X 0.984" height. 11-13Cr. Sol. 5.0 fins/in. 0.098" thick. X 0.748" height. CS Sol. 3.0 fins/in. 0.098" thick. X 0.748" height. 11-13Cr. Sol. 3.0 fins/in. 0.050" thick. X 1.000" height. 11-13Cr. Sol. 5.0 fins/in. 0.050" thick. X 1.000" height. CS Sol. 5.0 fins/in. 0.050" thick. X 0.750" height. 11-13Cr. Sol. 5.0 fins/in. 0.098" thick. X 0.500" height. CS Sol. 3.0 fins/in.	Rust Veto 377T
83	2011	J-F1039	Petro-Chem Development Co.,In	F101990-05	28	6.625" O.D. SA-312-TP347H	5.0 m.	0.100" thick. X 1.000" height. 304-SS Sol. 4.0 fins/in.	Rust Veto 377T
84	2011	J-F1041	Boustead International Heaters.	628-240	480	1.660" O.D. SA-106-B	3.9 m.	0.051" thick. X 0.256" height. CS Sol. 4.0 fins/in. 0.051" thick. X 0.630" height. CS Sol. 5.0 fins/in.	Rust Veto 377T
85	2011	J-F1042	Vogt Power International	Amata	5,460	1.500" O.D. SA-178-A (5,112 Tubes) 1.500" O.D. SA-213-T11 (116 Tubes) 1.500" O.D. SA-213-T22 (232 Tubes)	15.7 m.	0.040" thick. X 0.375" height. CS Sol. 7.3 fins/in. 0.040" thick. X 0.500" height. CS Serr. 7.3 fins/in. 0.040" thick. X 0.375" height. 409-SS Sol. 6.8 fins/in. 0.040" thick. X 0.500" height. 409-SS Sol. 7.3 fins/in.	Rust Veto 377T
86	2011	J-F1043	Boustead International Heaters.	629-240	3,360	1.660" O.D. SA-355-P22	5.0 m.	0.051" thick. X 0.492" height. 409-SS Serr. 5.1 fins/in.	Rust Veto 377T
87	2011	J-F1044	Petro-Chem Development Co.,In	F-10-1995-1996	62	4.500" O.D. SA-106-B (32 Tubes) 6.625" O.D. SA-106-B (30 Tubes)	6.8 m.	0.051" thick. X 0.752" height. CS Sol. 3.5 fins/in.	Rust Veto 377T

No.	Year	Job No.	Customer Name	Project Name	Q'ty	Tubes :	Tube Length	Fins :	Coating Type
88	2011	J-F1045	Petro-Chem Development Co.,In	F-10-1991-0510	756	4.500" O.D. SA-106-B (648 Tubes) 4.500" O.D. SA-335-P22 (108 Tubes)	8.9 m.	0.050" thick. X 0.750" height. CS Sol. 5.0 fins/in. 0.051" thick. X 0.500" height. 11-13Cr. Sol. 3.0 fins/in.	Rust Veto 377T
89	2011	J-F1046	Electricity Generating Authority of Thailand (EGAT)	Namphong project	13,420	1.250" O.D. SA-192 (10,280 Tubes) 1.500" O.D. SA-192 (3,140 Tubes)	15.0 m. 15.0 m.	0.031" thick. X 0.394" height. CS Sol. 5.0 fins/in. 0.031" thick. X 0.472" height. CS Sol. 3.5 fins/in.	Rust Veto 377T
90	2011	J-F1047	EMCO (Thailand)	TKT30643	824	4.500" O.D. SA-106-B (384 Tubes) 4.500" O.D. SA-335-P22 (152 Tubes) 4.500" O.D. SA-312-TP347H (288 Tubes)	12.9 m.	0.051" thick. X 0.787" height. 11-13Cr. Sol. 5.0 fins/in. 0.051" thick. X 0.984" height. 18Cr-8Ni. Sol. 5.0 fins/in. 0.051" thick. X 0.512" height. 18Cr-8Ni. Sol. 5.0 fins/in.	Rust Veto 377T
91	2011	J-F1048	Lummus Technology Heat Transfer	6-2571-1120	1,253	6.625" O.D. SA-312-TP304H (60 Tubes) 6.625" O.D. SA-335-P5 (45 Tubes) 6.625" O.D. SA-335-P22 (60 Tubes) 5.563" O.D. SA-312-TP304H (24 Tubes) 5.563" O.D. SA-335-P5 (36 Tubes) 5.563" O.D. SA-106-B (150 Tubes) 4.000" O.D. SA-106-B (54 Tubes) 3.500" O.D. SA-106-B (120 Tubes) 2.875" O.D. SA-335-P91 (236 Tubes) 2.875" O.D. SA-335-P22 (96 Tubes) 2.875" O.D. SA-106-B (372 Tubes)	12.2 m. 12.9 m. 12.0 m. 8.9 m. 11.9 m. 12.9 m. 11.9 m. 12.9 m. 11.5 m. 11.6 m. 11.6 m.	0.051" thick. X 0.752" height. 18Cr-8Ni. Sol. 5.0 fins/in. 0.051" thick. X 0.752" height. 11-13Cr. Sol. 5.0 fins/in. 0.051" thick. X 0.752" height. CS Sol. 5.0 fins/in. 0.051" thick. X 0.500" height. 18Cr-8Ni. Sol. 4.0 fins/in. 0.051" thick. X 0.500" height. 11-13Cr. Sol. 5.0 fins/in. 0.051" thick. X 0.500" height. CS Sol. 5.0 fins/in.	Rust Veto 377T
92	2011	J-F1049	Kinetics Technology Intenational Corporation	KT018236P18606	56	6.625" O.D. SA-106-B	10.0 m.	0.059" thick. X 0.985" height. CS Sol. 4.0 fins/in.	Rust Veto 377T
93	2011	J-F1050	Boustead International Heaters.	630/240	196	6.625" O.D. SA-106-B (132 Tubes) 6.625" O.D. SA-312-TP347H (64 Tubes)	7.9 m.	0.050" thick. X 0.374" height. CS Sol. 2.0 fins/in. 0.050" thick. X 1.000" height. CS Sol. 5.0 fins/in. 0.050" thick. X 0.752" height. 11Cr. Sol. 5.0 fins/in.	Rust Veto 377T
94	2011	J-F1051	Boustead International Heaters.	631/240	128	6.625" O.D. SA-335-P9	6.3 m.	0.050" thick. X 0.512" height. CS Sol. 5.0 fins/in. 0.050" thick. X 0.478" height. CS Sol. 5.0 fins/in. 0.050" thick. X 0.984" height. CS Sol. 5.0 fins/in.	Rust Veto 377T
95	2011	J-F1052	Boustead International Heaters.	632/240	80	5.563" O.D. SA-106-B	5.5 m.	0.059" thick. X 0.752" height. CS Sol. 2.5 fins/in.	Rust Veto 377T
96	2011	J-F1055	Boustead International Heaters.	634/240	744	6.625" O.D. SA-106-B (64 Tubes) 2.375" O.D. SA-106-B (680 Tubes)	5.1 m. 5.2 m.	0.051" thick. X 1.000" height. CS Sol. 5.0 fins/in. 0.051" thick. X 0.748" height. CS Sol. 3.0 fins/in. 0.051" thick. X 0.492" height. CS Sol. 2.0 fins/in. 0.051" thick. X 0.394" height. CS Sol. 3.0 fins/in. 0.051" thick. X 0.236" height. CS Sol. 3.0 fins/in.	Rust Veto 377T
97	2011	J-F1056	Boustead International Heaters.	633/240	52	5.563" O.D. SA-312-TP347	3.3 m.	0.059" thick. X 1.000" height. 304-SS Sol. 4.0 fins/in.	Rust Veto 377T
98	2011	J-F1057	Boustead International Heaters.	635/240	480	1.900" O.D. SA-213-T22	4.5 m.	0.051" thick. X 0.500" height. 11Cr. Serr. 5.0 fins/in.	Rust Veto 377T
99	2011	J-F1058	Petro-Chem Development Co.,In	F11-2008-09	384	4.500" O.D. SA-335-P9	9.7 m.	0.105" thick. X 0.748" height. 11-13Cr. Sol. 4.0 fins/in.	Rust Veto 377T
100	2011	J-F1059	Boustead International Heaters.	639/240	16	6.625" O.D. SA-106-B	4.2 m.	0.051" thick. X 1.000" height. CS Sol. 5.0 fins/in. 0.051" thick. X 0.500" height. CS Sol. 5.0 fins/in.	Rust Veto 377T
101	2011	J-F1060	Boustead International Heaters.	636/240	272	4.500" O.D. SA-106-B (240 Tubes) 4.500" O.D. SA-335-P22 (32 Tubes)	10.8 m. 7.6 m.	0.051" thick. X 1.000" height. CS Sol. 5.0 fins/in. 0.051" thick. X 0.866" height. CS Sol. 5.0 fins/in. 0.051" thick. X 0.750" height. 11Cr. Sol. 4.0 fins/in. 0.051" thick. X 0.630" height. CS Sol. 4.0 fins/in. 0.051" thick. X 0.500" height. 11Cr. Sol. 4.0 fins/in.	Rust Veto 377T

No.	Year	Job No.	Customer Name	Project Name	Q'ty	Tubes :	Tube Length	Fins :	Coating Type
102	2011	J-F1061	Boustead International Heaters.	637/240	216	8.625" O.D. SA-213-TP321 (192 Tubes) 8.625" O.D. SA-106-B (24 Tubes)	6.4 m. 11.2 m.	0.059" thick. X 0.748" height. 11Cr. Sol. 5.0 fins/in. 0.059" thick. X 0.315" height. CS Sol. 3.0 fins/in.	Rust Veto 377T
103	2011	J-F1062	Born Heaters Canada ULC	IRPC 8059	6	6.625" O.D. SA-312-TP321	2.7 m.	0.050" thick. X 0.984" height. CS Sol. 5.0 fins/in.	Rust Veto 377T
104	2011	J-F1063	Born Heaters Canada ULC	IRPC 8060	36	4.500" O.D. SA-106-B	3.7 m.	0.050" thick. X 0.984" height. CS Sol. 5.0 fins/in. 0.050" thick. X 0.984" height. 11Cr. Sol. 5.0 fins/in.	Rust Veto 377T
105	2011	J-F1064	Petro-Chem Development Co.,In	F11200407-09 / (622/PD54022)	230	5.563" O.D. SA-106-B (36 Tubes) 4.500" O.D. SA-213-TP347 (64 Tubes) 4.500" O.D. SA-335-P22 (96 Tubes) 4.500" O.D. SA-335-P9 (24 Tubes) 4.500" O.D. SA-106-B (10 Tubes)	6.0 m. 6.2 m. 6.2 m. 6.2 m. 11.4 m.	0.060" thick. X 1.000" height. 304SS Sol. 3.5 fins/in. 0.050" thick. X 1.000" height. 304SS Sol. 3.5 fins/in. 0.050" thick. X 1.000" height. 11Cr. Sol. 5.0 fins/in. 0.050" thick. X 1.000" height. CS Sol. 5.0 fins/in. 0.050" thick. X 0.875" height. 11Cr. Sol. 4.0 fins/in. 0.050" thick. X 0.500" height. 11Cr. Sol. 2.0 fins/in.	Rust Veto 377T
106	2011	J-F1065	Petro-Chem Development Co.,In	F102003-28 / (608/PD54018)	6	4.500" O.D. Incoloy 600H	5.9 m.	0.060" thick. X 0.500" height. 304SS Serr. 1.5 fins/in.	Rust Veto 377T
107	2011	J-F1066	Petro-Chem Development Co.,In	F102000-21	160	8.625" O.D. Incoloy 800H (36 Tubes) 8.625" O.D. SA-335-P5 (80 Tubes) 3.500" O.D. SA-335-P5 (44 Tubes)	6.1 m. 8.2 m. 8.2 m.	0.050" thick. X 0.500" height. 11Cr. Sol. 2.0 fins/in. 0.050" thick. X 0.625" height. 11Cr. Sol. 4.5 fins/in. 0.050" thick. X 0.752" height. 11Cr. Sol. 5.0 fins/in.	Rust Veto 377T
108	2011	J-F1070	Kinetics Technology International Corporation	KT419608	466	141.3 mm O.D. TP347 (20 Tubes) 168.3 mm O.D. P22 (56 Tubes) 114.3 mm O.D. P91 (198 Tubes) 89.1 mm O.D. A106B (192 Tubes)	\$13.29	1.27 mm thick. X 19.1 mm height. 18Cr-8Ni Sol. 197 fins/m. 1.27 mm thick. X 19.1 mm height. CS Sol. 197 fins/m. 1.5 mm thick. X 12.7 mm height. 18Cr-8Ni Sol. 197 fins/m. 1.5 mm thick. X 12.7 mm height. CS Sol. 197 fins/m.	Rust Veto 377T
109	2011	J-F1071	Boustead International Heaters.	645/240	1,008	48.1 mm O.D. TP321 (1008 Tubes)	3.571 m.	1.27 mm thick. X 16.00 mm height. 409Ss Serr 197 fins/m.	Rust Veto 377T
110	2011	J-F1072	Boustead International Heaters.	641/240	320	114.3 mm O.D. P5 (320 Tubes)	6.644 m.	1.5 mm thick. X 25.4 mm height. 11Cr. Sol. 100 fins/m.	Rust Veto 377T
111	2011	J-F1073	Lummus Technology Heat Transfer B.V.	6-2608-1126	880	114.3-219 mm O.D.TP347 114.3-219 mm O.D.P9 114.3-219 mm O.D.P22 114.3-219 mm O.D.A106B	8.455-9.320 m.	1.27-1.5 thick. X 19 mm height. 18Cr-8Ni Sol.118 fins/m. 1.27-1.5 thick. X 19 mm height. 11-13Cr Sol.118 fins/m. 1.27-1.5 thick. X 19 mm height. CS Sol.118 fins/m.	Rust Veto 377T
112	2011	J-F1074	Boustead International Heaters.	640/240	600	42.2 mm O.D. TP347	3.838-4.589 m.	1.27 mm thick. X 10 mm height. 304SS Serr. 197 fins/m.	Rust Veto 377T
113	2011	J-F1077	Boustead International Heaters.	648/240	88	88.9 mm O.D. A106B 88.9 mm O.D. TP316i	7.832-8.895 m. 7.832-8.895 m.	1.5 mm thick. X 12.7 mm height. 11-13Cr Sol. 157 fins/m. 1.5 mm thick. X 12.7 mm height. CS Sol. 157 fins/m.	Rust Veto 377T
114	2012	J-F1078	Boustead International Heaters.	647/262 (repeat order F1055 & 1074)	1,304	42.2 mm O.D. 347SS 60.33 mm O.D. A106B 168.3 mm O.D.A106B	3.919-6.030 m.	1.27 mm thick. X 6-25.4 mm height. 304SS Sol. 79-197 fins/m. 1.27 mm thick. X 6-25.4 mm height. CS Sol. 79-197 fins/m.	Rust Veto 377T
115	2012	J-F1079	Boustead International Heaters.	644/240 & 644/241	666	42.2,60.3,141.3 mm O.D. TP347H 42.2,60.3,141.3 mm O.D. A106	4.582-6.871 m.	1.27 mm thick. X 7-25.4 mm height. 409SS Sol. 138-197 fins/m. 1.27 mm thick. X 7-25.4 mm height.CS Sol. 138-197 fins/m.	Rust Veto 377T
116	2012	J-F1080	Boustead International Heaters.	650/240	320	88.9 mm O.D. A106B	2.032-3.000 m.	1.27 thick. X 12.7 mm height.CS Serr. 118-157 fins/m.	Rust Veto 377T
117	2012	J-F1081	Boustead International Heaters.	656/240 & 656/241 (repeat order F1079/1605)	666	42.2,60.3,141.3 mm O.D. TP347H 42.2,60.3,141.3 mm O.D. A106	4.582-6.871 m.	1.27 mm thick. X 7-25.4 mm height. 409SS Sol. 138-197 fins/m. 1.27 mm thick. X 7-25.4 mm height.CS Sol. 138-197 fins/m.	Rust Veto 377T

No.	Year	Job No.	Customer Name	Project Name	Q'ty	Tubes :	Tube Length	Fins :	Coating Type
118	2012	J-F1083	Lummus Technology Heat Transfer B.V.	IRPC 6-2623-1120	114	114.3 mm O.D. A106B	4.320-5.455 m.	2.5 mm thick. X 12.7mm height.CS Sol. 118 fins/m.	Rust Veto 377T
119	2012	J-F1084	Born Heaters Canada ULC.	9399-08	36	168.3 mm O.D. A335 P5	3.505-4.560 m.	1.27 mm thick. X 12.7-25.4 mm height.CS Sol. 197 fins/m.	Rust Veto 377T
120	2012	J-F1085	Born Heaters Canada ULC.	8063-08	65	168.3 mm O.D. A106B	4.75-5.67 m.	2.7 mm thick X 19 mm height CS Sol.118 Fins/m.	Rust Veto 377T
121	2012	J-F1086	Born Heaters Canada ULC.	8064-08	153	168.3 mm O.D. A106B	5.368-6.268 m.	1.27 mm thick X 12.7-25.4 mm height CS Sol. 197 fins/m.	Rust Veto 377T
122	2012	J-F1087	ITT S.P.A.	KB-11022-23	64	165.2 mm O.D. P11 165.2 mm O.D. 347SS	5.176-6.715 m. 5.176-6.715 m.	1.5 mm thick X 16-25.4 mm height CS Sol. 157-197 fins/m.	Rust Veto 377T
123	2012	J-F1088	Boustead International Heaters.	665/240	160	42.2 mm O.D. A106B	3.359 - 3.925 m.	1.27 mm thick X 6.5-16 mm height CS Sol. 157-197 fins/m.	Rust Veto 377T
124	2012	J-F1089	GASCO	Finning	92	114.3 mm O.D. A106B	6-8 m.	1.5 mm thick X 25.4 mm height 409SS Sol. 170 fins/m.	Rust Veto 377T
125	2012	J-F1090	Thi Tulsa Heaters INC.	12-772-BM-5A	338	101.6,168.3 mm O.D. A106B	3.455-7.318 m	1.27 mm thick X 19.05-25.4 mm height CS Sol. 197-276 fins/m.	Rust Veto 377T
126	2012	J-F1091	Thi Tulsa Heaters INC.	12-774-BM-5A	209	101.6,168.3 mm O.D. A106B	3.455-7.318 m	1.27 mm thick X 19.05-25.4 mm height CS Sol. 197-276 fins/m.	Rust Veto 377T
127	2012	J-F1092	Foster Wheeler India Private Ltd.	PTT / Chevron Project (Thailand)	757	114.3 mm O.D. A106B	2.15-8.661 m	1.27 mm thick X 12.7-25.4 mm height CS Serr. 98-197 fins/m.	Rust Veto 377T
128	2012	J-F1093	Selas Fluid Processing Corporatiion	BASF Fina Finning	996	3",3.51",4.5",5.5" O.D. SA-106-B 3",3.51",4.5",5.5" O.D. P11 3",3.51",4.5",5.5" O.D.T91	28.625-36.714 ft	0.050" thick. X 0.75"-1" height. CS Sol. 5.0 fins/in. 0.050" thick. X 0.75"-1" height. 11-13Cr Sol. 5.0 fins/in. 0.050" thick. X 0.75"-1" height. 18Cr-8Ni Sol. 5.0 fins/in.	Rust Veto 377T
129	2012	J-F1094	Boustead International Heaters.	667/240	1,026	42.2 mm O.D. A335 P11	3.932 - 4.4 m.	1.27 mm thick X 15.9 mm height 11-13Cr Sol. 197 fins/m.	Rust Veto 377T
130	2012	J-F1095	ITT S.P.A.	11093-5B/476	168	114.3 , 139.8 mm O.D. A106B	5.092 - 8.018 m.	1.27 mm thick X 19-25.4 mm height CS Sol. 197 fins/m.	Rust Veto 377T
131	2012	J-F1097	Boustead International Heaters.	671-240 Finning	1,272	114.3 mm O.D. A106B ; P22	6.237 - 9.509 m.	1.27 mm thick X 12.7-19.05 mm height CS Sol. 157-197 fins/m. 1.27 mm thick X 12.7-19.05 mm height 11-13Cr Sol. 157-	Rust Veto 377T
132	2012	J-F1098	Petro-Chem Development Co.,In	F-12-2028 Finning	612	114.3 mm O.D. A106B ; P11	8 - 9.721 m.	1.27 mm thick X 19 mm height CS Sol. 118-197 fins/m. 1.27 mm thick X 19 mm height 11-13Cr Sol. 118-197	Rust Veto 377T
133	2012	J-F1099	Petro-Chem Development Co.,In	F-12-0890 Finning	48	114.3 mm O.D. TP316	9.59 - 9.965 m.	2.5 mm thick X 19.05 mm height 11-13Cr Sol. 118 fins/m. 2.5 mm thick X 19.05 mm height CS Sol. 118 fins/m.	Rust Veto 377T
134	2012	J-F1100	Petro-Chem Development Co.,In	F-12-2025-2026 Finning	2,688	4.500" O.D. P22;P11	27.333 - 30.937 ft	0.050" thick. X 0.38"-1" height. 11-13Cri Sol. 3-5.0 fins/in.	Rust Veto 377T
135	2012	J-F1101	Boustead International Heaters.	658-240 Finning	3,360	60.3 ; 73 mm O.D A106B;A312 TP316L	15.332 - 16.32 m.	1.27 mm thick X 12-22 mm height CS Sol. 157-197 fins/m. 1.27 mm thick X 12-22 mm height 304SS Sol. 157-197	Rust Veto 377T
136	2012	J-F1102	Born Heaters Canada ULC.	9405-08 Finning	120	168.3 mm O.D. P11;316Ti	9.320-10.052 m.	1.27 mm thick X 12.7 mm height CS Sol. 158-197 fins/m. 1.27 mm thick X 12.7 mm height 11-13Cr Sol. 158-197	Rust Veto 377T

No.	Year	Job No.	Customer Name	Project Name	Q'ty	Tubes :	Tube Length	Fins :	Coating Type
137	2012	J-F1103	FURNACE ENGINEERING INC.	ICHTHYS PROJECT	96	168.3 mm O.D. A106B	8.33 - 9.17 m.	1.27 mm thick X 25.4 mm height CS Sol. 197 fins/m.	Rust Veto 377T
138	2013	J-F1106	EMCO (Thailand)	BHC/EB2-021/13M001 Finning	56	141.3;168.3 mm O.D. P22,P9	3.422-5.254 m.	1.27 mm thick X 25.4 mm height CS Sol. 197 fins/ m. 1.27 mm thick X 25.4 mm height 11-13Cr Sol. 197 fins/ m.	Rust Veto 377T
139	2013	J-F1107	ITT S.P.A.	B-10119-20-040 Finning	4	165.2 mm O.D. A106B	5.192 m	1.27 mm thick X 25.4 mm height CS Sol. 197 fins/ m.	Rust Veto 377T
140	2013	J-F1108	ITT S.P.A.	12329-B Finning	18	168.3 mm O.D. TP304H	4.401-5.1 m	1.27 mm thick X 19 mm height 18Cr-8Ni Sol. 197 fins/m.	Rust Veto 377T
141	2013	J-F1109	Born Heaters Canada ULC.	9417-05 & 08 Finning	40	219.1 mm O.D. A106B	12.534 m	1.27 mm thick X 25.4 mm height CS Sol. 197 fins/ m. 1.27 mm thick X 25.4 mm height 11-13Cr Sol. 197 fins/ m.	Rust Veto 377T
142	2013	J-F1110	ITT S.P.A.	11141-9B Finning	794	101.6,114.3,168.3,219.1,88.9 mm O.D A213_T5 101.6,114.3,168.3,219.1,88.9 mm O.D 101.6,114.3,168.3,219.1,88.9 mm O.D 101.6,114.3,168.3,219.1,88.9 mm O.D 101.6,114.3,168.3,219.1,88.9 mm O.D 101.6,114.3,168.3,219.1,88.9 mm O.D	3.426 - 13.800 m	1.27 mm thick X 10-25.4 mm height 11-13Cr, CS, 304SS Sol. 75- 197 fins/ m. 1.27 mm thick X 10-25.4 mm height 11-13Cr, CS, 304SS 1.52 mm thick X 10-25.4 mm height 11-13Cr, CS, 304SS	Rust Veto 377T
143	2013	J-F1111	Petro-Chem Development Co.,In	F122043-12 Finning	524	114.3,89.1 mm O.D Incoloy 800H 114.3,89.1 mm O.D A335 P22 114.3,89.1 mm O.D TP304H 114.3,89.1 mm O.D A106B	7.992 - 9.706 m	1.5mm thick X 9.53-15.87 mm height 11-13Cr, CS, 304SS,310SS Sol.39 - 197 fins/ m.	Rust Veto 377T
144	2013	J-F1112	Boustead International Heaters.	679/240 Finning	15	168 mm O.D A106B	9.254-10.000 m	1.27 mm thick X 12.7-25.4 mm height CS Serr 197 fins/m.	Rust Veto 377T
145	2013	J-F1114	ITT S.P.A.	12638-41B-010 Finning	138	168.3 , 114.3 mm O.D A312_Tp347H 168.3 , 114.3 mm O.D A312_Tp321 168.3 , 114.3 mm O.D A106_GrB	3.776 - 7.625 m.	1.5 mm thick X 18 -25.4 mm height 304SS,409SS ,CS Sol. 122-197 fins/m. 1.27 mm thick X 18 -25.4 mm height 304SS,409SS ,CS Sol.	Rust Veto 377T
146	2013	J-F1115	Kirchner Italia S.p.A.	DANGOTE FERTILIZER PROJECT - NIGERI A	1,299	141.3,168.3 mm O.D A106B 141.3,168.3 mm O.D A335 P11 141.3,168.3 mm O.D TP304H	14.626 - 16.014 m.	1.27 mm thick X 12.7 - 19.1 mm height 304SS,409SS ,CS Sol. 177-197 fins/m.	Rust Veto 377T
147	2013	J-F1116	GASCO	Upgrade Project	72	4" O.D. A106B	17.333 -18.55 m	0.064 " thick X 1 " height 409SS ,CS Serr 5.5 fins/ in	Rust Veto 377T
148	2013	J-F1119	Boustead International Heaters.	676-240 Finning	3,648	42.2 mm O.D A106B	8.424 - 8.9 m	1.27 mm thick X 9.5 - 25.4 mm height CS Sol. 118-236 fins/m. 1.27 mm thick X 9.5 - 25.4 mm height CS Serr. 118-236	Rust Veto 377T
149	2013	J-F1120	Boustead International Heaters.	675-240 Finning	870	42.2 mm O.D A106B	3.024 - 3.283 m	1.27 mm thick X 12.7 mm height 11-13Cr Serr. 236 fins/m.	Rust Veto 377T
150	2013	J-F1121	Boustead International Heaters.	680-240 Finning suspended	672	168.3 ,141.3 mm O.D A312 TP317L 168.3 ,141.3 mm O.D SA335 P22	9.393 - 11.8 m	0.059 " thick X 0.375 " - 1 " height 11-13Cr Sol. 2-4 fins/in	Rust Veto 377T
151	2013	J-F1122	Boustead International Heaters.	681-240 Finning	1,002	48.3 mm O.D A335 P11	4.624 - 4.860	1.27 mm thick X 15 mm height 11-13Cr Serr. 197 fins/m.	Rust Veto 377T

No.	Year	Job No.	Customer Name	Project Name	Q'ty	Tubes :	Tube Length	Fins :	Coating Type
152	2013	J-F1123	Petro-Chem Development Co.,In	F132051-01 Finning	160	4.500" O.D. Incoloy 800H	23.496 - 58.198 ft	0.050" thick. X 1" height. TP321SS Sol. 5 fins/in.	Rust Veto 377T
153	2013	J-F1124	Kirchner Italia S.p.A.	B-7080 Finning	1,466	141.3 mm O.D A106B	5.246 - 6.386 m.	1.27 mm thick X 25.4 mm height CS Sol. 197 fins/m.	Rust Veto 377T
154	2013	J-F1125	Born Heaters Canada ULC.	9428-08 Finning	232	60.3 mm O.D A106B 114.3 mm O.D TP316Ti 114.3 mm O.D TP316Ti	10.100-10.83 m 10.100 m 10.100-10.850 m	1.27 mm thick X 12.7 mm height CS Sol. 197 fins/m. 1.27 mm thick X 25.4 mm height 11-13Cr Sol. 197 fins/m. 1.27 mm thick X 25.4 mm height CS Sol. 197 fins/m.	Rust Veto 377T
155	2013	J-F1126	ITT S.P.A.	12657-8B - RfQ MR 18921 Finning	732	4.5 " O.D 304H 4.5 " O.D 304H 4.5 " O.D A106B 4.5 " O.D A106B 4.5 " O.D A106B 4.5 " O.D P11 4.5 " O.D P11 4.5 " O.D P11 4.5 " O.D P22	11.934 - 12.38 m 11.934 - 13.607 m 11.934 - 12.449 m 11.934 - 12.441 m 11.934 - 12.9071 m 11.934 - 12.534 m 11.934 m. 11.934-12.422 m. 11.934-12.507 m.	1.50 mm thick X 9.50 mm height 304SS Sol. 63-79 fins/m. 1.50 mm thick X 15.9 mm height 304SS Sol. 197 fins/m. 1.50 mm thick X 15.9 mm height CS Sol. 197 fins/m. 1.50 mm thick X19.1 mm height CS Sol. 197 fins/m. 1.50 mm thick X12.7 mm height CS Sol. 118 fins/m. 1.50 mm thick X15.9 mm height 410 Sol. 161 fins/m. 1.50 mm thick X15.9 mm height CS Sol. 197 fins/m. 1.50 mm thick X15.9 mm height CS Sol. 98 fins/m. 1.50 mm thick X15.9 mm height 410 Sol.197 fins/m.	Rust Veto 377T
156	2013	J-F1127	Alstom Procurement and Logistics Dept.	4100482865-0 Finning	237	114.3 mm O.D A106C 114.3 mm O.D A106C	15.545 m 15.545 m	1.27 mm thick X12.7 mm height 409SS Sol. 118 fins/m. 1.27 mm thick X12.7 mm height CS Serr. 157-236 fins/m.	Rust Veto 377T
157	2013	J-F1128	Vogt Power International	IRPC-PP-(Q13099R2) Finning	7,752	1.500" O.D. SA-213-T22 1.500" O.D. SA-213-T11 1.500" O.D. SA-210-A1	12.6 m.	0.040" thick. X 0.375" height. 409-SS Sol. 5.0 fins/in. 0.040" thick. X 0.500" height. CS Serr. 7.3 fins/in.	Rust Veto 377T
158	2013	J-F1129	Vogt Power International	Amata 4 Finning	5,460	1.500" O.D. SA-178-A 1.500" O.D. SA-213-T11 1.500" O.D. SA-213-T22	15.7 m.	0.040" thick. X 0.375" height. CS Sol. 7.3 fins/in. 0.040" thick. X 0.500" height. CS Serr. 7.3 fins/in. 0.040" thick. X 0.375" height. 409-SS Sol. 6.8 fins/in. 0.040" thick. X 0.500" height. 409-SS Sol. 7.3 fins/in.	Rust Veto 377T
159	2013	J-F1130	Vogt Power International	Amata 5 Finning	5,460	1.500" O.D. SA-178-A 1.500" O.D. SA-213-T11 1.500" O.D. SA-213-T22	15.7 m.	0.040" thick. X 0.375" height. CS Sol. 7.3 fins/in. 0.040" thick. X 0.500" height. CS Serr. 7.3 fins/in. 0.040" thick. X 0.375" height. 409-SS Sol. 6.8 fins/in. 0.040" thick. X 0.500" height. 409-SS Sol. 7.3 fins/in.	Rust Veto 377T
160	2013	J-F1131	PTT Thailand	3120006527 Finning	379	114.3 mm O.D. A106B	2.000-9.121 m	1.27 mm thick X12.7-25.4 mm height CS Serr. 98- 197 fins/m.	Rust Veto 377T
161	2014	J-F1132	Alstom Procurement and Logistics Dept.	4100516384 Finning	16	168.3 mm O.D. A106B	15.545 m	1.27 mm thick X19 mm height CS Serr. 236 fins/m.	Rust Veto 377T
162	2014	J-F1133	Petro-Chem Development Co.,In	F132050-17 Finning	608	3.5 " O.D. SA106B 4.5 " O.D. SA335 P22 4.5 " O.D. A312 TP304H 4.5 " O.D. SA106B	35.27083 ft -37.36458 ft 36.10417 ft -40.71875 ft 36.10417 ft -39.61979 ft 35.27083 ft -38.59896 ft	0.049" thick. X 0.625 " - 0.75"height. CS Sol.5 fins/in. 0.049" thick. X 0.625"height.409SS Sol.5 fins/in. 0.049" thick. X 0.5"height. 18Cr-8Ni Sol.5 fins/in. 0.049" thick. X 0.625 "height. CS Sol.5 fins/in.	Rust Veto 377T
163	2014	J-F1134	Petro-Chem Development Co.,In	NORTH AMERICAN GROWTH (NAG)	2,192	88.9 mm O.D A/SA312 TP316H,A/SA335 P22, 141.3 mm O.D A106 Gr.B 168.3 mm O.D A312 TP304H,A106 Gr.B	16.966-18.215 m 16.814-18.479 m 16.966-18.053 m	1.27 mm thick X 19,22.2 mm height 310SS,304SS,11-13Cr Sol. 197 fins/m. 1.27 mm thick X 25.4 mm height CS Sol. 197 fins/m. 1.27 mm thick X 12.7, 19 mm height 310SS,CS Sol. 197	Rust Veto 377T
164	2014	J-F1135	Born Heaters Canada ULC.	8070-08 Finning	352	114.3 mm O.D A106B 114.3 mm O.D A106B	11.828-12.486 m 11.828-12.486 m	1.27 mm thick X 22.2 mm height CS Sol. 197 fins/m. 1.27 mm thick X 22.2,12.7,9.5 mm height 11-13Cr Sol.	Rust Veto 377T

No.	Year	Job No.	Customer Name	Project Name	Q'ty	Tubes :	Tube Length	Fins :	Coating Type
165	2014	J-F1136	Born Heaters Canada ULC.	8068-08 Finning	133	141.3 mm O.D A335 P11 168.3 mm O.D A335 P11	11.58-12.748 m 11.551- 13.756 m	1.27 mm thick X 25.4mm height CS,11-13Cr Sol. 197 fins/m. 1.27 mm thick X 25.4mm height CS,11-13Cr Sol. 197 fins/m.	Rust Veto 377T
166	2014	J-F1137	PCD HEURTEY INDIA	PX4-Charge Heater for RIL Jamnagar P.O No 300719	64	219.1 mm O.D A335 P22 219.1 mm O.D A335 P22	6.205 m 7.391 m	1.27 mm thick X 25.4mm height 304SS Sol. 197 fins/m. 1.27 mm thick X 25.4mm height 304SS Sol. 197 fins/m.	Rust Veto 377T
167	2014	J-F1138	Petro-Chem Development Co.,In	ABINE PASS LIQUEFACTION PROJECT STAGE 2	2,688	4.500" O.D. P22;P11	27.333 - 30.937 ft	0.050" thick. X 0.38"-1" height. 11-13Cr Sol. 3-5.0 fins/in.	Rust Veto 377T
168	2014	J-F1139	Boustead International Heaters	683/240 Finning	504	42.2 mm O.D. SA312 TP310S	4.824-5.027 m	1.3 mm thick. X 15 mm height. 409SS Serr 220 fins/m.	Rust Veto 377T
169	2014	J-F1140	Boustead International Heaters	684/240 Finning (cancel)	2,520	88.9 mm O.D. Alloy 800 N08810	9.4-10.058 m	1.3 mm thick. X 15.00,17.00 mm height. AISI 409 Solid 167,197 fins/m.	Rust Veto 377T
170	2014	J-F1141	Vatana Phaisal Engineering	CP-Chem/JGC Finning	3,152	4.5 mm O.D. TP304H,347SS,A335 P22,A106B	57.83-60.83 ft	0.05" thick. X 0.5,0.75,1" height. 310SS,304SS,11-13Cr Serr 5 fins/in.	Rust Veto 377T
171	2014	J-F1142	Kirchner Italia S.p.A.	B-7220-23/148 Finning	544	114.3 mm O.D. A106B,A335 P22	12.33-13 m	1.3 mm thick. X 19.05 mm height. CS,11-13Cr Solid 197,157 fins/m.	Rust Veto 377T
172	2014	J-F1143	Thai Oil Public Company Limited	TR14023 Finning	12	114.3 mm O.D. 304SS	12 m	1.25 mm thick. X 17.85 mm height. 304SS Solid 197 fins/m.	Rust Veto 377T
173	2014	J-F1144	RCR Asia	Thai oil Box 1	4,526	38.1 mm O.D. SA 213 T22,SA210A1	13.845 m	1 mm thick. X 13.00,16.00 mm height. 409SS,CS 197,260 fins/m.	Rust Veto 377T
174	2014	J-F1145	OnQuest Canada	9432-08	288	1.5" O.D. SA 213 T22	10.64583-11.375 ft	0.05" thick. X 0.5" height. 11-13Cr 2.0,5.0 fins/in.	Rust Veto 377T
175	2014	J-F1146	Boustead International Heaters	686/240	1,188	48.3 mm O.D. A335 P11	4.024-4.300 m	1.3 mm thick. X 19.1 mm height. 409SS Serr 197 fins/m.	Rust Veto 377T
176	2014	J-F1147	Kirchner Italia S.p.A.	B-7422-67/279	564	88.9,141.3 mm O.D. A335 P11,TP304H,SA333 Gr.6,A335 P22	12.326-13.866 m	1.27 mm thick. X 9.5,15.9 mm height. CS,304SS,11-13Cr Solid 197,177 fins/m.	Rust Veto 377T
177	2014	J-F1148	Vogt Power International	NNEG-17483	5,264	1.5" O.D. SA 213 T22, SA 178	52.083-52.634 ft	0.039" thick. X 0.5" height. CS,409SS Serr 6.59892,7.29996,6.49986,1.99898,5.99948 fins/in.	Rust Veto 377T
178	2014	J-F1149	Vogt Power International	SPR-17484	5,264	1.5" O.D. SA 213 T22,SA 178	52.083-52.634 ft	0.039" thick. X 0.5" height. CS,409SS Serr,Solid 7.0,7.3,6.5,2.0 fins/in.	Rust Veto 377T
179	2014	J-F1150	Foster Wheeler Engineering	020101-UK-0010 a/c NSRP Reformer Project	2,214	60.3,101.6,114.3 mm O.D. A106B,A335 P22,TP304H	9.60-14.80 m	1.5 mm thick. X 23,13,10,21 mm height. CS,11-13Cr,18Cr- 8Ni Solid 60,177,197 fins/m.	Rust Veto 377T
180	2014	J-F1151	Boustead International Heaters	687/240	32	114.3 mm O.D. A106B	8-10 m	1.27 mm thick. X 12.7,19.05 mm height. CS Solid 197,138 fins/m.	Rust Veto 377T
181	2014	J-F1152	ITT S.P.A.	13643-5B	28	168.3 mm O.D. A335 P11	5.026-6.015 m	1.27 mm thick. X 25.4 mm height. CS,11-13Cr Solid 197 fins/m.	Rust Veto 377T
182	2014	J-F1153	Vogt Power International	Trans Canada 17479	17,520	44.5,38.1,50.8 mm O.D. SA 213 T91,SA 213 T22,SA210A1,SA 192,A213- T11,SA789 S31803	19.85-22.09 m	1.00,1.25 mm thick. X 8.001,12.7,9.525,15.875, mm height. 409SS,CS Solid,Serr 149.60,271.65,275.59,157.48,181.10,118.11,255.90,98. 42,236.22 fins/m.	Rust Veto 377T
183	2014	J-F1154	Boustead International Heaters	693/240	196	5.562,4.5" O.D. A312 TP317L,SA335 P11	8.27-11.80 m	0.059" thick. X 1,0.75,0.5,0.375,0.8,0.875" height. 11-13Cr Solid 4,3,5 fins/in.	Rust Veto 377T
184	2014	J-F1155	Boustead International Heaters	692/240	2,304	60.3 mm O.D. ASTM A106B	6.32-7.25 m	1.27 mm thick. X 20 mm height. CS Solid 197 fins/m.	Rust Veto 377T

No.	Year	Job No.	Customer Name	Project Name	Q'ty	Tubes :	Tube Length	Fins :	Coating Type
185	2014	J-F1156	Kirchner Italia S.p.A.	SRC Mogas Cogen PJ – Furnaces 7101-B/7102-B	72	168.3 mm O.D. A312 TP347	3.73 m	1.27 mm thick. X 25.4 mm height. 304SS Solid 197 fins/m.	Rust Veto 377T
186	2014	J-F1157	Boustead International Heaters	695/240	504	42.2 mm O.D. A335 P11	6.458 m	1.27 mm thick. X 18.5 mm height. 409SS Solid 197 fins/m.	Rust Veto 377T
187	2014	J-F1158	Boustead International Heaters	696/240	96	168.3 mm O.D. ASTM A312 TP317L	10.668-11.652 m	1.5 mm thick. X 25.4 mm height. 11-13Cr Solid 158 fins/m.	Rust Veto 377T
188	2015	J-F1159	Vogt Power International	Amata Bowin BPB1 17488 - HRSG x 2	5,460	38.1 mm O.D. SA 213 T22,A213-T11,SA 178	15.8496 m	1 mm thick. X 9.53,12.70 mm height. 409SS,CS Solid,Serr 268,287,201 fins/m.	Rust Veto 377T
189	2015	J-F1160	Vogt Power International	Duke Lee 17487	12,128	1.5" O.D. SA210A1,SA 192	74.073-74.521 ft	0.032" thick. X 0.50" height. CS Serr 7.20,6.00 fins/in.	Rust Veto 377T
190	2015	J-F1161	Boustead International Heaters	698/240	31	168.3 mm O.D. A106B	4.432-5.99 m	1.5 mm thick. X 25.4 mm height. CS Solid 118 fins/m.	Rust Veto 377T
191	2015	J-F1162	Boustead International Heaters	699/240	360	42.2 mm O.D. A335 P11	4.274-4.424 m	1.3 mm thick. X 16 mm height. 11-13Cr Serr 197 fins/m.	Rust Veto 377T
192	2015	J-F1163	Boustead International Heaters	694/240	192	141.3 mm O.D. A335 P9,A335 P11,	9.64-11.800 m	1.27 mm thick. X 25.4,15.88,12.7, mm height. CS,11-13Cr Solid 197,158,138,79,170 fins/m.	Rust Veto 377T
193	2015	J-F1164	Boustead International Heaters	701/240	750	42.2 mm O.D. A106B	3.274-3.574 m	1.25 mm thick. X 16,18 mm height. CS Serr 197 fins/m.	Rust Veto 377T
194	2015	J-F1165	Boustead International Heaters	697/242	256	114.3 mm O.D. SA106B,SA335 P22	11.862-12.91 m	1.5 mm thick. X 12.7,25.4 mm height. CS,11-13Cr Solid 118,158 fins/m.	Rust Veto 377T
195	2015	J-F1166	Vogt Power International	KCE 17493	4,536	1.25,1.5" O.D. SA 178,A213-T11	51.36-51.526 ft	0.039" thick. X 0.5" height. CS,409SS Serr 5.9,7.1,7.3 fins/in.	Rust Veto 377T
196	2015	J-F1167	CBI (Thailand) LTD	6-2722-0073	4,282	141.3,73,114.3 mm O.D. TP304H,SA335 P91,A335 P5,A106B	12.87-27.860 m	1.27 mm thick. X 12.7,19.1 mm height. 18Cr-8Ni,11-13Cr,CS Solid 118,197,157 fins/m.	Rust Veto 377T
197	2015	J-F1169	Nooter Eriksen	142000 Chilca Coil Bundle	3,823	2.248,1.5,1.251,1.751" O.D. SA 213 T91,A213-T11,SA 178	58.01-59.173 ft	0.039" thick. X 0.5,0.374" height. 409SS,CS Serr,Solid 2.625,6.121,6.125,7.000,3.875,6.875 fins/in.	Rust Veto 377T
198	2015	J-F1170	Heurtey Petrochem	F-15-2064	504	5.563" O.D. A312 TP 316H,A312 TP 304H	61.75-63.115 ft	0.05" thick. X 1,0.5" height. 11-13Cr Solid 2.5,3.8,5 fins/in.	Rust Veto 377T
199	2015	J-F1171	Boustead International Heaters	704-240	672	88.9 mm O.D. A335 Gr P11	5.4824-621 m	1.27 mm thick. X 16.00 mm height. CS Serr 197 fins/m.	Rust Veto 377T
200	2015	J-F1172	Heurtey Petrochem	F-14-2061-2062	2,688	4.500" O.D. P22;P11	27.333 - 30.937 ft	0.050" thick. X 0.38"-1" height. 11-13Cri Sol. 3-5.0 fins/in.	Rust Veto 377T
201	2015	J-F1173	CBI (Thailand) LTD	192026-0073	16,284	73mm,114.3mm,141.3mm O.D. A106 ;TP30H;P91;P11	7.488 - 9.731 m	1.5mm thick. X 12.7-19.1mm height. 11-13Cri,18Cr-8Ni;CS Sol. 157-197 fins/m.	Rust Veto 377T
202	2016	J-F1175	CBI (Thailand) LTD	192774	502	73mm,88.9mm,114.3mm,141.3mm,16 8.3mm O.D.P22,P11,TP321,TP347H	2.179 - 13.008 m	1.27mm thick. X 6.35-25.4mm height. 11-13Cri,18Cr-8Ni;CS Sol. 79-158 fins/m.	Rust Veto 377T
203	2016	J-F1176	CBI (Thailand) LTD	192773	256	101.6mmO.D.P11,TP347H	8.363 - 8.920 m	1.27mm thick. X 12.70mm height. 11-13Cri Sol. 118-157 fins/m.	Rust Veto 377T
204	2016	J-F1177	Boustead International Heaters	706/240	168	114.3mmO.D.P11	3.932-4.566 m	1.27mm thick. X 12.70-25.4mm height. 11-13Cri Sol. 118-197 fins/m.	Rust Veto 377T

No.	Year	Job No.	Customer Name	Project Name	Q'ty	Tubes :	Tube Length	Fins :	Coating Type
205	2016	J-F1178	Heurtey Petrochem	F-15-2068	1,344	4.5"O.D.P11,P22	27.333 ft-30.938 ft	0.050" thick. X 0.38"-1.00" height. 11-13Cri Sol. 3-5 fins/in.	Rust Veto 377T
206	2016	J-F1179	Alstom Procurement and Logistics Dept.	Haveli 8055 - OCC x 2	33,300	1.50",1.75",1.752"O.D.T91,T22,SA210A ;SA210C	72.999 ft	0.031" thick. X 0.51"-0.63" height. 11-13Cri,CS Serr. 2.25-7.37 fins/in.	Rust Veto 377T
207	2016	J-F1180	Vogt Power International	Amata ABRP3 -17489 - MSG x 2	5,460	38.1 mm O.D. SA 213 T22,A213-T11,SA 178	15.8496 m	1.00 mm thick. X 9.53,12.70 mm height. 409SS,CS Solid,Serr 268,287,201 fins/m.	Rust Veto 377T
208	2016	J-F1182	Boustead International Heaters	711/240	132	219.1,168.3,114.3 mm O.D. A312 TP347,A335 Gr P11	4.674 m - 6.116 m	1.27 mm thick. X 25.4,12.70 mm height. 409SS,Solid, 197 fins/m.	Rust Veto 377T
209	2016	J-F1183	Boustead International Heaters	713/240	88	168.3 mm O.D.,A335 Gr P9	6.336 m - 7.889 m	1.50 mm thick. X 25.4,19.05 mm height. 409SS,Solid, 157,118 fins/m.	Rust Veto 377T
210	2016	J-F1184	Vogt Power International	Amata ABRP -IV17490 - MSG x 2	5,460	38.1 mm O.D. SA 213 T22,A213-T11,SA 178	15.8496 m	1.00 mm thick. X 9.53,12.70 mm height. 409SS,CS Solid,Serr 268,287,201 fins/m.	Rust Veto 377T
210	2016	J-F1185	Vogt Power International	Maputo V17502	4,518	1.25",1.50",1.75" O.D. SA213-T11,SA 192	50.00 ft	0.039",0.032" thick. X 0.5" mm height. 409SS,CS ,Serr 3,7,8 fins/Inch.	Rust Veto 377T
210	2016	J-F1186	CBI (Thailand) LTD	192378 ORPIC LIWA Plastics Project	2,686	73,114.3,101.6,141.3,168.3 mm O.D.A106B,TP-347H,A335 P22,SA335 P91	10.514 m-21.214 m	1.27 mm thick. X 12.7,15.9,19.1,22.2mm height. 409SS,CS,304SS,310SS Serr 108,118,157,197 fins/m.	Rust Veto 377T
211	2016	J-F1187	Process Technology and Services	9452-08	48	168.3 mm O.D. A335 P9	9.715 m - 10.715 m	2.50 mm thick. X 19.00 mm height. CS Solid, 98 fins/m.	Rust Veto 377T
212	2016	J-F1188	GE	T14-00020 Bridgeport Full Cframe TS	9,100	38.1,44.45 mm O.D. SA210A1,SA210C,SA213T22,SA213T91	24.7882 m	0.80,1.00mm thick. X 10.00,13.00,16.00mm height.409SS, CS ,Serrated,Solid, 80,130,150,220,245,290fins/m.	Rust Veto 377T
213	2016	J-F1189	Vogt Power International	Amata 5 -IV17491 - MSG x 2	5,460	38.1 mm O.D. SA 213 T22,A213-T11,SA 178	15.8496 m	1.00 mm thick. X 9.53,12.70 mm height. 409SS,CS Solid,Serr 268,287,201 fins/m.	Rust Veto 377T
214	2016	J-F1190	OnQuest Canada	9453-08	28	168.3 mm O.D. A335 P11	3.216 m - 4.180 m	1.27 mm thick. X 25.40 mm height. 409SS Solid, 197 fins/m.	Rust Veto 377T
215	2017	J-F1191	Nooter Eriksen	161200 Riverside Module	20,640	1.5,1.75,2.2,2.25 mm O.D.A213-T11,SA 178,SA 192,SA 213 T22,SA 213 T91	72.03 Ft-73.92 Ft	0.04 "thick. X 0.5" and 0.375" height. 409SS, CS,Solid,Serr, 3.375 - 7 fins/Inch.	Rust Veto 377T
216	2017	J-F1192	Vatana Phaisal Engineering	Cherry Point	192	114.3 mm O.D. A-312 TP317L,SA-335 P22	8.2296 m - 10.0584 m	2.667 mm thick. X 19.05 and 15.88 mm height. 409SS and 304 Solid, 122-157 fins/m.	Rust Veto 377T
217	2017	J-F1193	Vogt Power International	Jamaica MSG Module Boxes	11,406	31.8, 38.1 mm O.D. SA192 ,SA213 T91,SA 213 T22	17.083 m - 17.243 m	1.00 mm thick. X 8.00 , 12.7, 15.9 mm height. 409SS and CS Solid,Serr, 110-197 fins/m.	Rust Veto 377T
218	2017	J-F1194	Vogt Power International	Berk Prai Boxes Final	2,817	38.1 mm O.D. SA192 ,SA210A1,SA 213 T22	16.764 m.	1.00 mm thick. X 8.00 , 12.7, mm height. 409SS and CS Solid,Serr, 177.165-287.401 fins/m.	Rust Veto 377T
219	2017	J-F1195	Heurtey Petrochem	Farabi Project	412	141.3,168.3 mm O.D. A335 P11	8.576m. - 13.677m.	1.30 mm thick. X25.4 mm height. 409SS and CS Solid, 197 fins/m.	Rust Veto 377T
220	2018	J-F1196	Kirchner Italia S.p.A.	UZBEKISTAN GAS TO LIQUID	424	168.3,141.3 mm O.D.A106B,P11,P22,P91,TP347,T9	5.254m.-19.311m.	1.30 mm thick. X25.4 and 19.10mm height. 409SS and CS Solid, 197 fins/m.	Rust Veto 377T
221	2018	J-F1197	Boustead International Heaters	725/240	410	114.31 mm O.D. A106B	6.00m.-8.854m.	1.27 mm thick. X19.10 mm height. CS Solid, 118-197 fins/m.	Rust Veto 377T
222	2018	J-F1198	Vatana Phaisal Engineering	INEOS - Convection Pipe Finning	1,182	3.5",4.5",6.63"O.D. A106B,P11,P22,P91,TP347H	44.33 Ft - 48 Ft	0.059"-0.098" thick. X0.75" height. CS,409SS,304SS Solid, 2.5-5.0 fins/Inch.	Rust Veto 377T

No.	Year	Job No.	Customer Name	Project Name	Q'ty	Tubes :	Tube Length	Fins :	Coating Type
223	2018	J-F1199	Vatana Phaisal Engineering	Geismar	252	4.5"O.D. A106B,P11,TP304H	17.416 Ft - 25.416 Ft	0.059" thick. X0.5"-0.75" height. CS,304SS Solid,4.0 - 4.5fins/Inch.	Rust Veto 377T
224	2018	J-F1200	CBI (Thailand) LTD	PTTGC Naphtha Cracker Project	2,340	73.00,141.3,168.30.D. A106B,P11,TP304H,P22,P91,P5	10.004m. - 11.762m.	1.27 mm thick. X12.70-19.50 mm height. CS,304SS,409SS Solid,118-197 fins/m.	Rust Veto 377T
225	2018	J-F1201	Vogt Power International	V175010	2,820	1.5"O.D. T22,SA210A1,T11	44.187 Ft - 44.401 Ft	0.039" thick. X0.5"height. CS,409SS Serr,7 fins/Inch.	Rust Veto 377T
226	2018	J-F1202	Vogt Power International	V175011	3,472	44.45 and 38.1 mm O.D. T22,SA210A1	16.465m.- 16.614m.	1.00 mm thick. X12.70 mm height. CS,409SS Solid,276-287 fins/m.	Rust Veto 377T
227	2018	J-F1203	Vogt Power International	V17512-17513	20,006	1.5"O.D. T22,SA210A1	46.371FT- 46.646FT.	0.031"-0.039" thick. X0.5"height. CS,409SS Serr,6-7 fins/Inch.	Rust Veto 377T
228	2018	J-F1204	Vogt Power International	V17516	7,239	44.45 and 38.1 mm O.D. T22,SA210A1	18.897m.- 21.945m.	1.00 mm thick. X8.00,12.70 mm height. CS,409SS Solid,110-256 fins/m.	Rust Veto 377T
229	2018	J-F1205	Vatana Phaisal Engineering	729/240	224	88.9 mm O.D. P11	4.824m.- 5.64m.	1.27 mm thick. X 16.00 mm height. CS Solid,197 fins/m.	Rust Veto 377T
230	2018	J-F1206	Vatana Phaisal Engineering	730/240	880	42.2 mm O.D. P11	3.274m.- 3.574m.	1.27 mm thick. X 15.00-18.00 mm height. CS Solid,197 fins/m.	Rust Veto 377T
231	2018	J-F1207	Process Technology and Services	8075-08	64	168.3 mm O.D. A106B	5.036m.- 5.945m.	1.30 mm thick. X 19.10-25.40 mm height. CS Solid,197 fins/m.	Rust Veto 377T
232	2018	J-F1208	Lotushitemp Metals co.,Ltd.	A015-03-18	24	168.3 mm O.D. A106B	12 m.	1.50 mm thick. X 19.10-25.00 mm height. CS Solid,118-197 fins/m.	Rust Veto 377T
233	2018	J-F1209	Vatana Phaisal Engineering	Shintech Louisiana	160	4.5 " O.D. Incoloy 800H	23.5 FT- 58.197 FT	0.050" thick. X1.00"height. 321SS Solid,5 fins/Inch.	Rust Veto 377T
234	2018	J-F1210	Vatana Phaisal Engineering	FHR	608	4" And 4.5 " O.D.B407 UNS N08810,P11,A106B	26.00 FT- 32.349 FT	0.105" thick. X0.5"-0.75"height. 304SS and 409SS Solid,2.2-74fins/Inch.	Rust Veto 377T
235	2018	J-F1211	Vogt Power International	V175017	27,108	31.8,38.1,44.5 mm O.D. ,T11 ,SA178	13.468 m.- 13.568 m.	1.00 mm thick. X8.00,12.70 mm height. CS,409SS Solid,106-256 fins/m.	Rust Veto 377T
236	2018	J-F1212	Vogt Power International	V175017	27,108	31.8,38.1,44.5 mm O.D. ,T11 ,SA178	13.468 m.- 13.568 m.	1.00 mm thick. X8.00,12.70 mm height. CS,409SS Solid and Serr,106-256 fins/m.	Rust Veto 377T
237	2018	J-F1213	Vatana Phaisal Engineering	CCLNG	1,344	4.5 " O.D. P11 and P22	27.333 FT- 30.937 FT	0.050" thick. X 0.38"-1.00"height. 409SS Solid,3.5-5 fins/Inch.	Rust Veto 377T
238	2018	J-F1214	Vatana Phaisal Engineering	Midstream	128	5.563"-8.625" O.D. P11 and A106B	18.25 FT- 55.260 FT	0.050" thick. X 0.875"-1.00"height. 409SS,CS Solid,2.58-5 fins/Inch.	Rust Veto 377T
239	2018	J-F1215	Boustead International Heaters	731/240	81	6.625" O.D. TP317L	16.416 FT- 32.666 FT	0.059" thick. X 1.00"height. 409SS Solid,4 fins/Inch.	Rust Veto 377T
240	2018	J-F1216	Boustead International Heaters	728/240	1,600	60.3 mm OD. TP347H	3.838 m. - 4.554 m.	1.27 mm thick x 15mm height. 304SS Serr, 197 fins/m.	Rust Veto 377T
241	2018	J-F1217	J.J. Advanced	9752/1808N005	144	73 mm - 141.30 mm O.D. TP304H and P91	3.2 m.-10.376 m.	1.3 mm thick x 12.7 mm height. 409SS and 304SS Solid, 59-197 fins/m.	Rust Veto 377T
242	2018	J-F1218	Chiyoda International Corporation	Exxon GYOF	1,284	88.9 mm - 168.28 mm O.D. 304SS,316L,A106B and A335 P22	20.4724 m.-22.7361 m.	1.27 mm thick x 12.7 mm - 25.40 mm height. 304SS, 310SS, 409SS and CS. Solid, 197 fins/m.	Tectyl 300G FT black
243	2018	J-F1219	CBI (Thailand) LTD	A015-03-18	12	141.30 mm O.D. 304SS, A312 TP304H	8.956 m. - 11.800 m.	1.27 mm thick x 12.7 mm height. 304SS. Solid, 59 fins/m.	Rust Veto 377T

No.	Year	Job No.	Customer Name	Project Name	Q'ty	Tubes :	Tube Length	Fins :	Coating Type
244	2018	J-F1220	Process Technology and Services	9485-05 - PTT - Coil Fab	70	168.3 mm O.D. A106B	4.21 m. - 6.52 m.	1.5 mm thick x 19 - 25 mm height. CS. Solid and Serr, 118-197 fins/m.	Rust Veto 377T
245	2018	J-F1221	ITT S.P.A.	HEC - BANGCHAK - CCR HCU - THAILAND	416	114.3 mm O.D. TP321,A106B ,TP347H	4.126 m. - 10.713 m.	2.5 mm thick x 11-19.10 mm height. 409SS and CS. Solid, 95-118 fins/m.	Rust Veto 377T
246	2018	J-F1222	Edgen Murray	SIN-1629	39	168.3 mm O.D. TP321	5.576 m. - 6.449 m.	2.5 mm thick x 19.05 mm height. CS Solid, 98 fins/m.	Rust Veto 377T
247	2018	J-F1223	Lotushitemp Metals co.,Ltd.	A11-002-18	48	73 - 141.3 mm O.D. A106B	6.000 m.	1.27 mm thick x 12.7 -19.05 mm height. Solid, 197 fins/m.	Rust Veto 377T
248	2018	J-F1224	Kinetics Technology	K315-PTTGC	236	141.3 mm - 168.3 mm O.D. TP316 Ti	6.250 m. - 10.400 m	2.5 mm thick x 19-20 mm height. Solid, 79 fins/m.	Rust Veto 377T
249	2018	J-F1225	Boustead International Heaters	736/240	240	114.3 mm O.D. SA106B	7.852 m. - 9.026 m.	1.27 mm thick x 12.7 - 25.4 mm height. Serr, 118-197 fins/m.	Rust Veto 377T
250	2019	J-F1226	CBI (Thailand) LTD	232153-MOCD2	516	73 mm - 168.3 mm O.D. A106GR.B,A312TP304H,A335P5,SA335 P91	12.336 m. - 27.774 m.	1.27 mm thick x 12.7 - 22.2 mm height. Solid, 197 fins/m.	Rust Veto 377T
251	2019	J-F1227	Vogt Power International	V17520	4,826	31.8 mm. - 44.5 mm O.D. A213-T11,SA 192,SA 213 T22	12.783 m. - 15.846 m.	1.27 mm thick x 7.94 - 12.7 mm height. Solid and Serr, 79 - 236 fins/m.	Rust Veto 377T
252	2019	J-F1228	Vogt Power International	17522 IPPL Heartland	3,772	31.8 mm. - 38.1 mm O.D. 2205,SA 178,SA 213 T22	12.783 m. - 15.846 m.	0.80-1.00 mm thick x 8.00 - 15.88 mm height. Solid and Serr, 102- 307 fins/m.	Tectyl 300G FT black
253	2019	J-F1229	Nooter Eriksen	GSRC Sriracha: Modules	70,588	31.75 mm. - 57.15 mm O.D. A213-T11,SA 192,SA 213 T22,SA 213 T91,SA210C,SA213-UNS-S30432,SA-789-S (S31803)	22.75 m. - 23.662 m.	0.80-1.00 mm thick x 8.00 - 15.88 mm height. Serr, 198.85- 275.59 fins/m.	Tectyl 300G FT black
254	2019	J-F1230	CBI (Thailand) LTD	1120655 Rev.02 ,Orpic Project	49	168.3 mm. O.D. A-335-GR- P22	10.514 m - 11.702 m.	1.27 mm thick x 22.20 mm height. Serr, 197 fins/m.	Rust Veto 377T
255	2019	J-F1231	J.J. Advanced	10128/1810N045	50	141.3 mm. O.D. A312 TP304H	10.376 m.	1.27 mm thick x 12.70 mm height. Solid,59 fins/m.	Rust Veto 377T
256	2019	J-F1232	Boustead International Heaters	738/240	1,344	60.3 mm. O.D. A335 P11	5.824 m. - 6.396 m.	1.27 mm thick x 15.00 mm height. Solid,157 fins/m.	Rust Veto 377T
257	2019	J-F1233	Kirchner Italia S.p.A.	B-8787-90/57	288	88.9 - 114.3 mm. O.D. A/SA 106 gr.B,A/SA 335 P9	7.044 m. - 14.601 m.	1.27 mm thick x 15.00 mm height. Solid,157 fins/m.	Rust Veto 377T
258	2019	J-F1234	Boustead International Heaters	739/240	72	114.3 mm. O.D.A376 TP347H	9.473 m. - 10.370 m.	1.27 mm thick x 19.00 mm height. Solid,196 fins/m.	Rust Veto 377T
259	2019	J-F1235	Kirchner Italia S.p.A.	BAPCO(B-8797-99)	104	88.9 mm. - 114.3 mm. O.D.SA-106 Gr.B	16.981 m. - 19.517 m.	1.27 mm thick x 12.7 - 21.00 mm height. Solid,177 - 197 fins/m.	Rust Veto 377T
260	2019	J-F1236	Kirchner Italia S.p.A.	NESTE SINGAPORE EXPANSION PROJECT	32	219.30 mm.O.D. A335P22	10.02 m.-10.865m.	1.3 mm thk x 25.4 mm height. Solid 197 fins/m.	Rust Veto 377T
261	2019	J-F1237	Vatana Phaisal Engineering	Long Son Project	1,790	88.9 mm. - 168.3 mm. O.D.SA-106 Gr.B,304H,347H,P22,P11	16.30 m.-21.15m.	1.27 mm thick x 12.7 - 25.4 mm height. Solid,118 - 236 fins/m.	Rust Veto 377T
262	2019	J-F1238	J.J. Advanced	10419/1806N002	180	60.3 mm. O.D. A335 P11	6.446 m. - 6.876 m.	1.5 mm thk x 25.4 mm height. Solid 157.5 fins/m.	Rust Veto 377T
263	2019	J-F1239	Kirchner Italia S.p.A.	B7993	1,840	42.3 - 60.3 mm. O.D. 316L,A213-T11,SA 213 T22,SA 213 T91,SA210A1	6.887m.-17.32m.	1.25 mm - 1.50 mm thk x 12.7 mm - 15.9 mm height.Solid 138-197 fins/m.	Rust Veto 377T
264	2019	J-F1240	J.J. Advanced	51908/1907N045	24	73.025mm. - 141.30 mm. O.D. A106B	9.564m.-10.952m.	1.3 mm thk x 12.7 mm - 19.05mm height. Solid 197 fins/m.	Rust Veto 377T

No.	Year	Job No.	Customer Name	Project Name	Q'ty	Tubes :	Tube Length	Fins :	Coating Type
265	2019	J-F1241	Boustead International Heaters	743/240	3,360	88.9 mm. O.D. A106B	18.974 m. - 20.574 m.	1.3 mm thk x 12.00 mm -16.00mm height. Solid 197 fins/m.	Rust Veto 377T
266	2019	J-F1242	Boustead International Heaters	748/240	200	42.2 mm. O.D. A335 P11	6.932 m.	1.5 mm thk x 15.00mm height. Solid 197 fins/m.	Rust Veto 377T
267	2019	J-F1243	Boustead International Heaters	747/240	24,458	48.3 mm. O.D. SA312 TP 316H SS	6.324 m. - 13.223 m.	1.27 mm thick x 10.00 - 15.00 mm height. SERRATED,100-197 fins/m.	Rust Veto 377T
268	2020	J-F1244	Boustead International Heaters	749/240	916	48.3 mm. O.D. A335P11	5.274 m. - 5.948 m.	1.30 mm thk x 16 mm height. Serr, 217 fins/m.	Tectyl 300G FT black
269	2020	J-F1245	Boustead International Heaters	746/240	648	88.9 mmO.D. P22,SA106B, A312 304H SS	3.224 m. - 6.481 m.	1.27 mm thk x 12.70 mm - 25.40 mm height. Solid, 197 fins/m.	Tectyl 300G FT black
270	2020	J-F1246	Boustead International Heaters	751/240	240	114.3 mmO.D.,SA106B	7.852m. - 9.026 m.	1.27 mm thk x 12.70 mm - 25.40 mm height. Serr, 118-197 fins/m.	Tectyl 300G FT black
271	2020	J-F1247	Lotushitemp Metals co.,Ltd.	A03-00-20	5	50.80 mmO.D.,A213-T12	12.3 m.	1.50 mm thk x 12.60 mm height. Solid, 333 fins/m.	Tectyl 300G FT black
272	2020	J-F1248	Boustead International Heaters	754/240	1,050	60.30 mmO.D.,A106B	4.524 m.-4.652 m.	1.27 mm thk x 13.00 mm height. Solid, 197fins/m.	Tectyl 300G FT black
273	2020	J-F1249	ExxonMobil	4551801638	24	88.9 mmO.D.,A312 TP 316H	8.267 m.-9.714 m.	1.27 mm thk x 12.70 mm height. Solid, 138fins/m.	Tectyl 300G FT black
274	2020	J-F1250	Nooter Eriksen	Nikolaos	18,027	31.8 mm -63.5 mm O.D.,A213-T11,SA 192,SA 213 T22,SA 213 T91,SA210A1	25.339 m.-26.529 m.	0.8-1.00mm thk x 9.5 mm - 15.9 mm height. Solid,118.11 - 314.96fins/m.	Tectyl 300G FT black
275	2020	J-F1251	International Heat Transfer Equipment Construction	IHEC-P-02-20-007	99	168.3 mmO.D.,SA106B	6.000 m.	1.27 mm thk x 12.70 mm - 25.4 mm. height. Solid, 197 fins/m.	Tectyl 300G FT black
276	2020	J-F1252	Nooter Eriksen	NE-GPD Project	70,588	31.75 mm. - 57.15 mm O.D. A213-T11,SA 192,SA 213 T22,SA 213 T91,SA210C,SA213-UNS-S30432,SA-789-S (S31803)	22.75 m. - 23.662 m.	0.80-1.00 mm thick x 8.00 - 15.88 mm height. Serr, 198.85- 275.59 fins/m.	Tectyl 300G FT black
277	2020	J-F1253	Nooter Eriksen	Golden Pass	7,056	1.5"-2.0" O.D. 213 T22,SA 213 T91,SA210C	66'-66.25'	0.050" thk x 0.38" - 0.63". height. Solid and Serr, 3.38 - 6.00 fins/inch.	Tectyl 300G FT black
278	2020	J-F1254	Vogt Power International	Nexif	2,856	31.75 - 38.10 mm - O.D.,SA192,T22,T91,SA210	15.850 m.	0.80-1.00 mm thk x 9.53 - 12.70 mm height. Serr-Solid, 122- 307 fins/m.	Tectyl 300G FT black
279	2020	J-F1255	Vogt Power International	B-Grimm	48,076	31.75 - 38.10 mm - O.D.,SA178,T22	15.850 m.	0.80-1.00 mm thk x 9.53 - 12.70 mm height. Serr, 94- 307 fins/m.	Tectyl 300G FT black
280	2020	J-F1256	Vogt Power International	Glow	9,280	31.75 - 38.10 mm - O.D.,SA210A1 and T11	17.0688 m.	0.80-1.00 mm thk x 12.70 mm height. Serr, 134-307 fins/m.	Tectyl 300G FT black
281	2020	J-F1257	Boustead International Heaters	756/240	8,160	42.2 mm -48.3mm O.D.,ASME SB407 N08800	6.324 m. - 8.00 m.	1.27 mm thk x 12.00 mm height. Serr 180 fins/m.	Tectyl 300G FT black
282	2020	J-F1258	Boustead International Heaters	755/240	824	114.3 mm -141.3mm O.D.,ASTM A106 Gr B	6.058 m. - 8.433 m.	1.27 mm thk x 12.7 -25.4 mm height. Solid 158-197 fins/m.	Tectyl 300G FT black
283	2020	J-F1259	Boustead International Heaters	750/240	176	168.3 mm O.D.,A335 Gr P5	10.032 m. - 12.00 m.	1.27 mm thk x 12.0 -25.4 mm height. Solid 157-197 fins/m.	Tectyl 300G FT black
284	2021	J-F1260	Vatana Phaisal Engineering	APCI Texas City Project and APCI Jubail Project	3,764	1.9"-4.5" O.D.,A335 Gr P11,TP304H,SA106B and B407 N08811	46.042' -48.75'	1.5 mm thk x 0.375"-0.75" height. Serr 3.5 - 5 fins/Inch. 410SS,304SS and CS	HV-1001N(B
285	2021	J-F1261	Vatana Phaisal Engineering	KT K383 Dos Bocas Refinery ICA Fluor Project	384	114.3 mm O.D.,A312 TP317L	8.900 m.- 10.089 m.	2.65 mm thk x19.mm height. Sol 157 fins/Inch. 11-13Cr	HV-1001N(B

No.	Year	Job No.	Customer Name	Project Name	Q'ty	Tubes :	Tube Length	Fins :	Coating Type
286	2021	J-F1262	Boustead International Heaters	758/240	1,203	60.3 mm O.D., A335 Gr P22	5.324 m. - 6.000 m.	1.27 mm. thk x 12.7 mm height. Serr 197 fins/m. , 409SS	HV-1001N(B
287	2021	J-F1263	Vatana Phaisal Engineering	KT-Assiut-Egypt Project	72	114.3 mm O.D., A335 Gr P9	9.245 m. - 9.813m.	2.65 mm thk x19.mm height. Sol 157 fins/Inch. 11-13Cr	HV-1001N(B
288	2021	J-F1264	Vatana Phaisal Engineering	Dos Bocas-Mexico Project	112	141.3-168.3 mm O.D., A335 Gr P11 and TP321	6.960m. - 9.108m.	1.30 mm thk x25.40mm height. Sol 138-197 fins/Inch. 11-13Cr,CS	HV-1001N(B
289	2021	J-F1265	Lummus Technology	Baltic Chemical Complex LLC (BCC)	8,714	73.00-168.3 mm O.D., A106,P91,P5 and TP347H	10.514m. -21.402m.	1.27mm thk x 12.70-25.40mm height. Sol 128-197 fins/Inch. 11-13Cr,CS,18Cr-8Ni	HV-1001N(B
290	2021	J-F1266	Lotushitemp Metals co.,Ltd.	A02-005-21	24	141.3 mm O.D.,TP304H	10.380 m.	1.30 mm thk x12.70mm height. Sol 59 fins/Inch. 304SS	N/A
291	2021	J-F1267	Kirchner Italia S.p.A.	KI-/B-5008	52	141.30 mm - 168.3 mm O.D TP347H and TP321H	4.760 m. - 12.313 m.	1.30 mm - 1.5 mm thk. X 25.4 mm height, Sol. 197 fins/meter, 11-13Cr and CS	HV-1001N or BTectyl 300G FT black
292	2021	J-F1268	Jord International Pty Ltd	C7709	4,248	38.1 mm OD., T22, SA-210A1 and TP430	14.405 m.	1.25 mm thk. X 19 mm height, Serr. 150 - 236 fins/meter,409SS , 410SS and CS	HV-1001N or BTectyl 300G FT black
293	2021	J-F1269	Nooter Eriksen	North Field Project	3,500	38.1 mm - 50.8 mm. OD., T22 and SA-210A1	9.400 m. - 9.959 m.	1.50 mm thk. X 12.7-15.9 mm height, Serr. 167-221 fins/meter,409SS and CS	HV-1001N or BTectyl 300G FT black
294	2021	J-F1270	Boustead International Heaters	761/240	434	114.3 mm. OD.,A106B	6.724 m. - 7.595 m.	1.27 mm thk. X 12.7-25.4 mm height, Solid. 79 - 236 fins/meter, CS	HV-1001N or BTectyl 300G FT black
295	2021	J-F1271	Boustead International Heaters	762/240	40	168.3 mm. OD.,A106B	6.232 m. - 6.582 m.	1.5 mm thk. X 25.4 mm height, Solid. 197 fins/meter, CS	HV-1001N or BTectyl 300G FT black
296	2021	J-F1272	Primoris Services Corporation	OnQuest PO 9522-08	20	141.30 mm - 168.3 mm O.D A106B	3.976 m. - 5.138 m.	1.27 mm and 1.50 mm thk. X 25 mm height, Solid. 197 fins/meter, CS	HV-1001N or BTectyl 300G FT black
297	2021	J-F1273	Boustead International Heaters	759/240	2,288	42.2 mm - 48.3 mm O.D A106B,304H and 321SS	7.521 m. - 8.499 m.	1.27 mm. X 10 mm - 16 mm.height, Solid. 197 fins/meter, CS,304ss and 409SS	HV-1001N or BTectyl 300G FT black
298	2022	J-F1274	J.J. Advanced	52140/2112N018	20	114.3 mm O.D SS316L	3.324 m.	1.27 mm. X 12.70 mm - 25.4 mm.height, Solid. 197 fins/meter,304ss	N/A
299	2022	J-F1275	Boustead International Heaters	763/240	880	60.3 mm O.D A106B and P11	14.324 m. -15.00 m.	1.27 mm. X 12.7 mm - 16 mm.height, Solid. 137-236 fins/meter, CS	HV-1001N or BTectyl 300G FT black
300	2022	J-F1276	Boustead International Heaters	764/240	1,224	42.2 mm O.D A335 P11	3.174 m. -3.264 m.	1.27 mm. X 12.7 mm - 12.70 mm.height, Serr 217 fins/meter,409SS	HV-1001N or BTectyl 300G FT black
301	2022	J-F1277	Nooter Eriksen	NE-QAPCO Project	1,107	31.75-38.10 mm O.D A213-T11 and SA192	17.850 m. -18.408 m.	0.8 mm. X 12.7 mm - 12.70 -15.90 mm.height, Serr172-315 fins/meter,409SS and CS	HV-1001N or BTectyl 300G FT black
302	2022	J-F1278	Lotushitemp Metals co.,Ltd.	A01-024-22	6	114.3 mm O.D.,A106B	9.750 m.	1.27 mm thk x 25.40 mm height. Sol 236 fins/Inch. CS	HV-1001N or BTectyl 300G FT black
303	2022	J-F1279	Vogt Power International	Saha Cogen MSG	2,556	31.75-38.1 OD., T91,T22,SA210A1	15.644 m.-15.702 m.	0.8 mm -1.0 mm x 12.7 mm height Serr, 157.48 - 307.09 fins/ meter, 409Ss and CS	HV-1001N or BTectyl 300G FT black
304	2022	J-F1280	Vogt Power International	Glow 2	4,744	1.25"-1.5", T91, T22 and SA210A1	55.374'-55.407'	0.032"-0.039" x 0.5" height Serr, 5.5-7.8 fins/ inch, 409SS and CS	HV-1001N or BTectyl 300G FT black
305	2022	J-F1281	Nooter Eriksen	Dradenau	5,082	31.80-38.1 OD., T91,T22,SA210A1	10.18 m - 14.127 m	0.8 mm -1.0 mm x 12.7 mm - 15.90 mm. height Serr, 152.56- 314.96fins/ meter, 409Ss and CS	HV-1001N or BTectyl 300G FT black
306	2022	J-F1282	Boustead International Heaters	766/240	28	141.30 OD.,A106B	5.292 m - 6.247 m	1.27 mm x 25.4 mm height, Solid, 197fins/meter,CS	HV-1001N or BTectyl 300G FT black

No.	Year	Job No.	Customer Name	Project Name	Q'ty	Tubes :	Tube Length	Fins :	Coating Type
307	2022	J-F1283	Vogt Power International	MSG box-IRPC	3,756	1.25"-1.5",T22,T11,SA192	54'	0.03"-0.04" heigh,Serr, CS,409SS, 2.5 - 7.8fins/inch	HV-1001N or BTectyl 300G FT black
308	2022	J-F1284	ExxonMobil	553181753 SAPG9P_100	100	88.9 OD.,A312 TP 316H	8.267 m - 9.864 m	1.27 mm x 12.7 mm heigh , Solid, 138fins/meter,310SS	N/A
309	2022	J-F1285	Nooter Eriksen	Tuxpan	32,352	31.75 - 57.15 OD.,SA-192,SA-210-C,TP 316,T11,T22,T91&S3043	22.172 m -22.594 m	0.8mm-1.0mm x 9.5- 15.9mm heigh , Serr & Solid, 118.11 - 314.96 fins/meter,304SS,409SS and CS	HV-1001N or BTectyl 300G FT black
310	2022	J-F1286	Nooter Eriksen	EGCO	4,282	31.75 - 50.8 OD.,SA192,T11,T22,T91	10.010 m -15.288m	0.8mm-1.0mm x 9.5- 15.9mm heigh , Serr & Solid, 226.38- 314.96 fins/meter,409SS and CS	HV-1001N or BTectyl 300G FT black
311	2022	J-F1287	Boustead International Heaters	768/240	392	141.30 OD.,A106B	5.481 m.-6.371 m.	1.27mm thk. x 19.50mm - 25.4 mm heigh,Solid,158-197 fins/meter, CS	HV-1001N or BTectyl 300G FT black
312	2022	J-F1288	Boustead International Heaters	767/240	132	168.3 OD.,A335 P11	6.230 m.-6.973m.	1.27mm thk. x 19.50mm - 25.4 mm heigh,Solid,118-197 fins/meter, CS	HV-1001N or BTectyl 300G FT black
313	2022	J-F1289	Vatana Phaisal Engineering	Borouge 4 Project	2,357	114.3 mm -219.1 mm. OD. A312 TP347H,SA106 GRB,SA335 P11	20.624 m.- 21.724 m.	1.30mm thk. x 1.27mm - 25.4 mm heigh,Serr,79-197 fins/meter, CS,11-13Cr, 304SS	HV-1001N or BTectyl 300G FT black
314	2022	J-F1290	Nooter Eriksen	NE-QAPCO2 Project	1,107	31.75-38.10 mm O.D A213-T11 and SA192	17.850 m. -18.408 m.	0.8 mm. X 12.7 mm - 12.70 -15.90 mm.height, Serr172-315 fins/meter,409SS and CS	HV-1001N or BTectyl 300G FT black
315	2022	J-F1291	Vogt Power International	V17549 Manzanillo	14,290	31.75-44.45 mm. OD.SA-192,SA-210C,T22 and T91,T92	24.9936 m.	0.8 mm.- 1.00 mm.thk. X 12.7 mm - 8.00- 12.70 mm.height, Serr79-307 fins/meter,409SS and CS	HV-1001N or BTectyl 300G FT black
315	2022	J-F1292	Vatana Phaisal Engineering	USGC II Project	1,820	114.3-219.1 mm.OD,SA106 Gr. B,A312-TP304H,SA312-TP347H,SA335-P22	27.990 m.-29.058 m.	1.27 mm.thk. X 12.7 mm - 25.4 mm.height, Serr 157-197fins/meter,304,409SS and CS	HV-1001N or BTectyl 300G FT black
316	2022	J-F1293	BORN INC. TULSA,OKLAHOMA	3130 Project	56	4.5"OD.,A335P9 and A335P22	14.083'-16.458'	0.105".thk. X 0.5"-0.75".height, Solid 3fins/Inch, CS	HV-1001N or BTectyl 300G FT black
317	2022	J-F1294	Innovare KTI-Fired Heaters	PTTGC5 Project	64	168.30-219.1 mm.OD,SA106 Gr. B	7.36 m.- 11.942 m.	1.30mm.thk. X 19.10 mm - 25.4 mm.height, Solid 197fins/meter, CS	HV-1001N or BTectyl 300G FT black
318	2022	J-F1295	Vatana Phaisal Engineering	KT K459 Salina Project.	256	114.3 mmOD.,A335P9	8.950 m. - 10.089 m.	2.67mm.thk. X 19.00 mm height, Solid 157fins/meter, 409SS	HV-1001N or BTectyl 300G FT black
319	2022	J-F1296	ExxonMobil	4553230156	324	88.9 -114.3 OD.,A312 TP 316H,304L and P5	8.267 m - 13.970 m.	1.27 mm x 9.52- 25.4 mm heigh , Solid, 138fins/meter,310SS,304SS and 409SS	N/A